

SUMMARY The river flow outlook for July indicates below normal to low flows across eastern Scotland and central and eastern England, with some catchments expected to experience notably or exceptionally low flows. In contrast, western areas are likely to see normal to above normal flows. The July to September outlook suggests a continuation of this east-west contrast, with flows remaining below normal to low in central and eastern areas, whilst western regions are expected to be in the normal range. Groundwater levels for both July and the July to September period are anticipated to be normal to below normal across the country.

Rainfall:

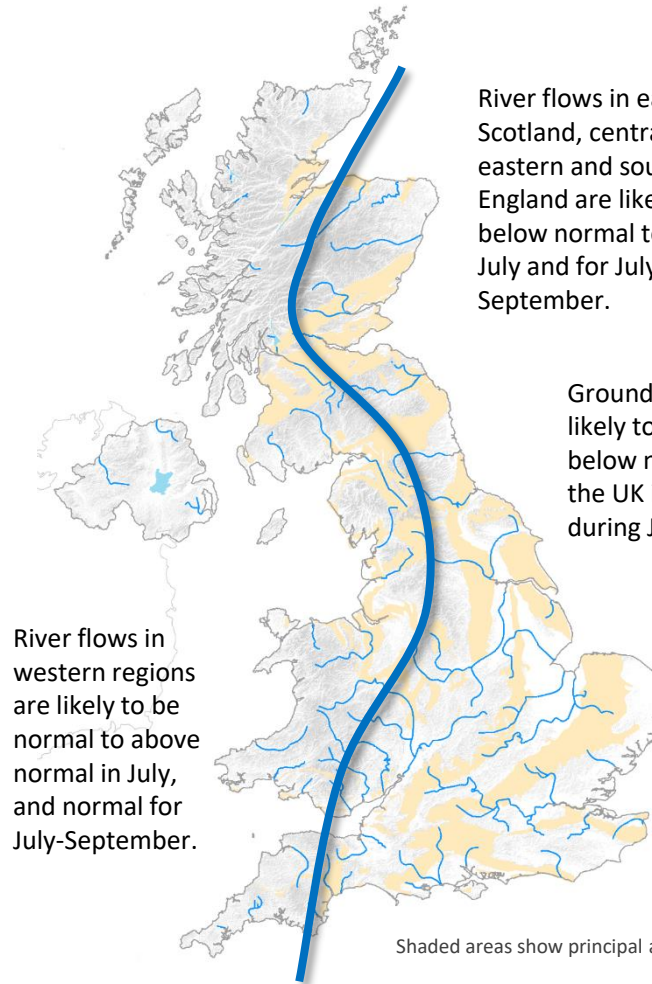
June rainfall saw a marked east-west contrast. Western areas, particularly parts of north-west England and western Scotland, recorded above average totals. Meanwhile, much of central and eastern England experienced a dry month, with large areas in central England receiving less than half the average rainfall for June. The latest Met Office forecast (issued 30.06.2025) indicates that the chances of either wet or dry conditions for both July and the July-September period are evenly balanced.

River flows:

River flows in June were generally within the normal to above range across western catchments, with some exceptionally high flows recorded in north-west England. In contrast, flows were below normal across much of the rest of the UK, with notably or exceptionally low flows observed in many catchments in eastern Britain and central and eastern England, some receiving only around a third of their average June flows. The outlook for July reflects recent unsettled conditions in the west, with normal to above normal flows expected in western Britain. Elsewhere, below normal to low flows are the most likely outcome, with some catchments likely to continue experiencing notably or exceptionally low flows. The July-September outlook suggests a continuation of this geographical contrast, with normal flows most likely in western Britain and below normal to low flows expected elsewhere. Some catchments may remain significantly below normal throughout the period.

Groundwater:

Groundwater levels in June were generally within the normal to below normal range across the UK, with notably low levels in Northern Ireland, east-central Scotland and south Wales. The outlook for July indicates that groundwater levels are likely to remain normal to below normal across most areas, with notably or exceptionally low levels expected to persist in some areas. Localised above normal levels may occur in slower-responding boreholes, such as those in the Chilterns. For the July-September period, normal to below normal levels are the most likely outcome across the country, although a gradual trend towards normal is possible in some areas.



River flows in eastern Scotland, central, eastern and southern England are likely to be below normal to low in July and for July-September.

Groundwater levels are likely to be normal to below normal across the UK in July and during July-September.

River flows in western regions are likely to be normal to above normal in July, and normal for July-September.

Shaded areas show principal aquifers

The UK Hydrological Outlook provides an outlook for the water situation for the United Kingdom over the next three months and beyond. For guidance on how to interpret the outlook, a wider range of information, and a full description of underpinning methods, please visit the website: www.hydoutuk.net

About the UK Hydrological Outlook:

This document presents an outlook for the UK water situation for the next 1-3 months and beyond, using observational datasets, meteorological forecasts and a suite of hydrological modelling tools. The outlook is produced in a collaboration between the UK Centre for Ecology & Hydrology (UKCEH), British Geological Survey (BGS), the Met Office, the Environment Agency (EA), Natural Resources Wales (NRW), the Scottish Environment Protection Agency (SEPA), and for Northern Ireland, the Department for Infrastructure – Rivers (DfIR).

Data and Models:

The UK Hydrological Outlook depends on the active cooperation of many data suppliers. This cooperation is gratefully acknowledged. Historic river flow and groundwater data are sourced from the [UK National River Flow Archive](#) and the [National Groundwater Level Archive](#). Contemporary data are provided by the EA, SEPA, NRW and DfIR. These data are used to initialise hydrological models, and to provide outlook information based on statistical analysis of historical analogues.

Climate forecasts are produced by the Met Office. Hydrological modelling is undertaken by UKCEH using the Grid-to-Grid and GR6J hydrological models. Hydrogeological modelling uses the AqMod model run by BGS. Supporting documentation is available from the Outlooks website: <https://hydoutuk.net/about/methods>

Presentation:

The language used in the summary presented overleaf generally places flows and groundwater levels into just three classes, i.e. below normal, normal, and above normal. However, the underpinning methods use as many as seven classes as defined in the graphic to the right, i.e. the summary uses a simpler classification than some of the methods. On those occasions when it is appropriate to provide greater discrimination at the extremes the terminology and definitions of the seven class scheme will be adopted.

	Percentile range of historic values for relevant month
Exceptionally high flow	> 95
Notably high flow	87-95
Above normal	72-87
Normal range	28-72
Below normal	13-28
Notably low flow	5-13
Exceptionally low flow	< 5

Disclaimer and liability:

The UK Hydrological Outlook partnership aims to ensure that all Content provided is accurate and consistent with its current scientific understanding. However, the science which underlies hydrological and hydrogeological forecasts and climate projections is constantly evolving. Therefore any element of the Content which involves a forecast or a prediction should not be relied upon as though it were a statement of fact. To the fullest extent permitted by applicable law, the UK Hydrological Outlook Partnership excludes all warranties or representations (express or implied) in respect of the Content.

Your use of the Content is entirely at your own risk. We make no warranty, representation or guarantee that the Content is error free or fit for your intended use.

The UK Hydrological Outlook is supported by the Natural Environment Research Council funded NC-UK (NE/Y006208/1) and [Hydro-JULES](#) (NE/S017380/1) Programmes.

Copyright:

Some of the features displayed on the maps contained in this report are based on the following data with permission of the controller of HMSO.

- Ordnance Survey data. © Crown copyright and/or database right 2005. Licence no. 100017897.
- Land and Property Services data. © Crown copyright and database right, S&LA 145.
- Met Office rainfall data. © Crown copyright.
- The three month outlook contained in the hydrological outlook is licensed under the terms of the [Open Government Licence](#)

All rights reserved. Unauthorised reproduction infringes crown copyright and may lead to prosecution or civil proceedings.

Further information:

For more detailed information about the UK Hydrological Outlook, and the derivation of the maps, plots and interpretation provided in this outlook, please visit the UK Hydrological Outlook website. The website features a host of other background information, including a wider range of sources of information which are used in the preparation of this Outlook. Dynamic access to many of the outputs of the UK Hydrological Portal are available on the [UK Hydrological Outlooks Portal](#).

Contact:

UK Hydrological Outlooks, UK Centre for Ecology & Hydrology, Wallingford, Oxfordshire, OX10 8BB
t: 01491 838800 e: <https://hydoutuk.net/contact>

Reference for the UK Hydrological Outlook:

UK Hydrological Outlook, 09 July 2025, UK Centre for Ecology & Hydrology, Oxfordshire UK, Online, <https://www.hydoutuk.net/latest-outlook/>

Other Sources of Information:

The UK Hydrological Outlook should be used alongside other sources of up-to-date information on the current water resources status and flood risk.

Environment Agency Water Situation Reports: provides summary of water resources status on a monthly and weekly basis for England: <https://www.gov.uk/government/collections/water-situation-reports-for-england>

Flood warnings are continually updated, and should be consulted for an up-to-date and localised assessment of flood risk:

- Environment Agency: <https://flood-warning-information.service.gov.uk/map>
- Natural Resources Wales: <https://flood-warning.naturalresources.wales/>
- Scottish Environment Protection Agency: <https://www.sepa.org.uk/flooding.aspx>

Hydrological Summary for the UK: provides summary of current water resources status for the UK: <https://nrfa.ceh.ac.uk/monthly-hydrological-summary-uk>

UK Met Office forecasts for the UK: <https://www.metoffice.gov.uk/>

UK Water Resources Portal: monitor the UK hydrological situation in near real-time including rainfall, river flow, groundwater and soil moisture from COSMOS-UK: <https://eip.ceh.ac.uk/hydrology/water-resources/>

June's mean river flows simulated by the Grid-to-Grid hydrological model

This map shows the simulated monthly mean flow across Great Britain for last month, ranked in terms of 54 years of historical flow estimates (1963 – 2016).

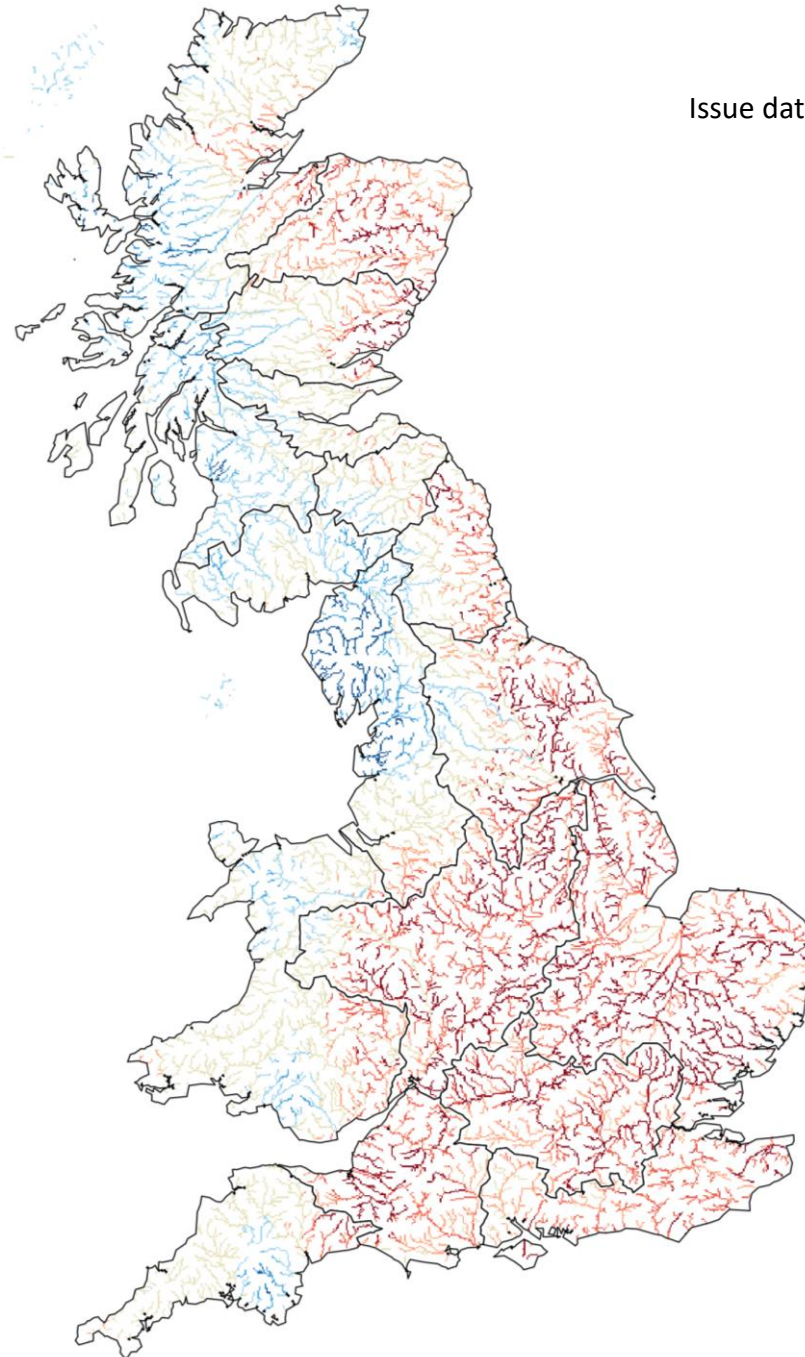
These flows are produced by the 1km resolution Grid-to-Grid (G2G) hydrological model, which is run up to the end of each calendar month using observed rainfall and MORECS potential evaporation as input.

Note that the G2G model provides estimates of natural flows.

Issue date: 07.07.2025

Flow estimate for each river pixel ranked in terms of historic % flow estimates (1963-2016)

Exceptionally high flow	> 95
Notably high flow	87-95
Above normal	72-87
Normal range	28-72
Below normal	13-28
Notably low flow	5-13
Exceptionally low flow	< 5



Current Daily Simulated Subsurface Water Storage Conditions

Based on subsurface water storage estimated for 30 June 2025

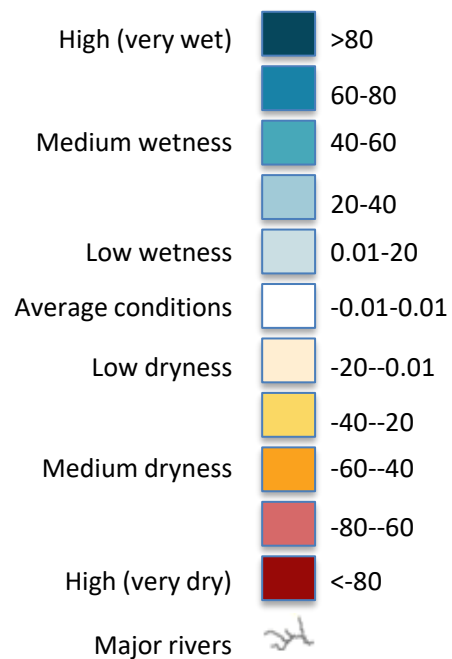
Issue date: 07.07.2025

These maps are based on Grid-to-Grid (G2G) hydrological model simulated subsurface water storage (water in the soil and groundwater), expressed as an anomaly from the historical monthly mean. To highlight areas that are particularly wet or dry, the storage anomaly is presented relative to historical extremes. Rainfall in WET areas with high positive relative wetness could result in flooding in the coming days/weeks. Areas of negative relative wetness indicate locations which are particularly DRY, and little or no rain in these areas could potentially lead to (or prolong) a drought. Maps of soil moisture only are available on the next page.

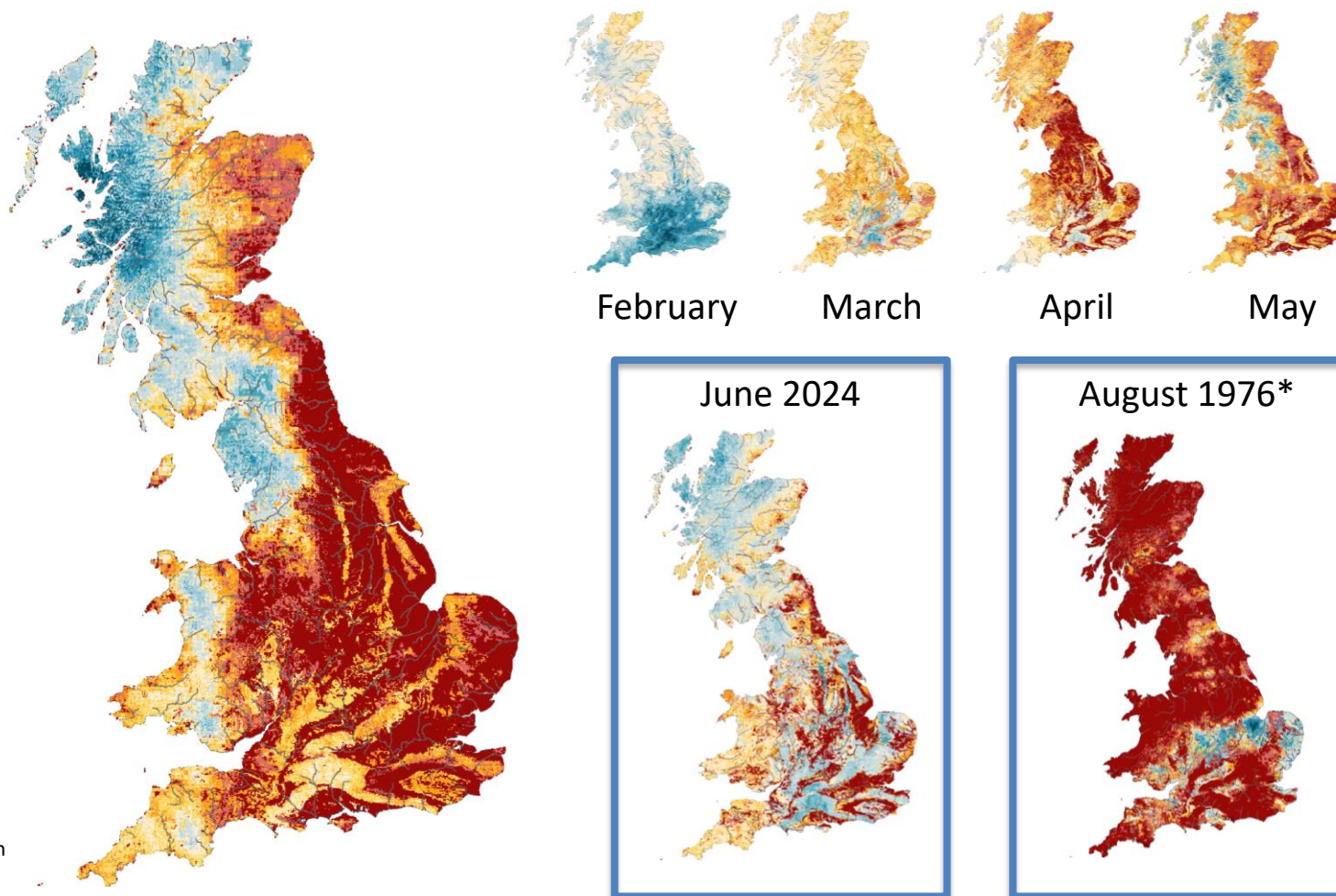
SUMMARY: Subsurface stores along the West Coast have been replenished by recent rainfall, resulting in low to medium wet stores. In the rest of the country, subsurface stores continue to be very dry, with low to medium dryness in the deeper aquifers.

Relative wetness

Water storage anomaly as a % of maximum (positive wetness) or minimum (negative wetness) storage anomaly (zero indicates average value)



Labels refer to estimated storage on final day of named month



*Example month displaying extreme negative wetness

July 2025

CURRENT CONDITIONS

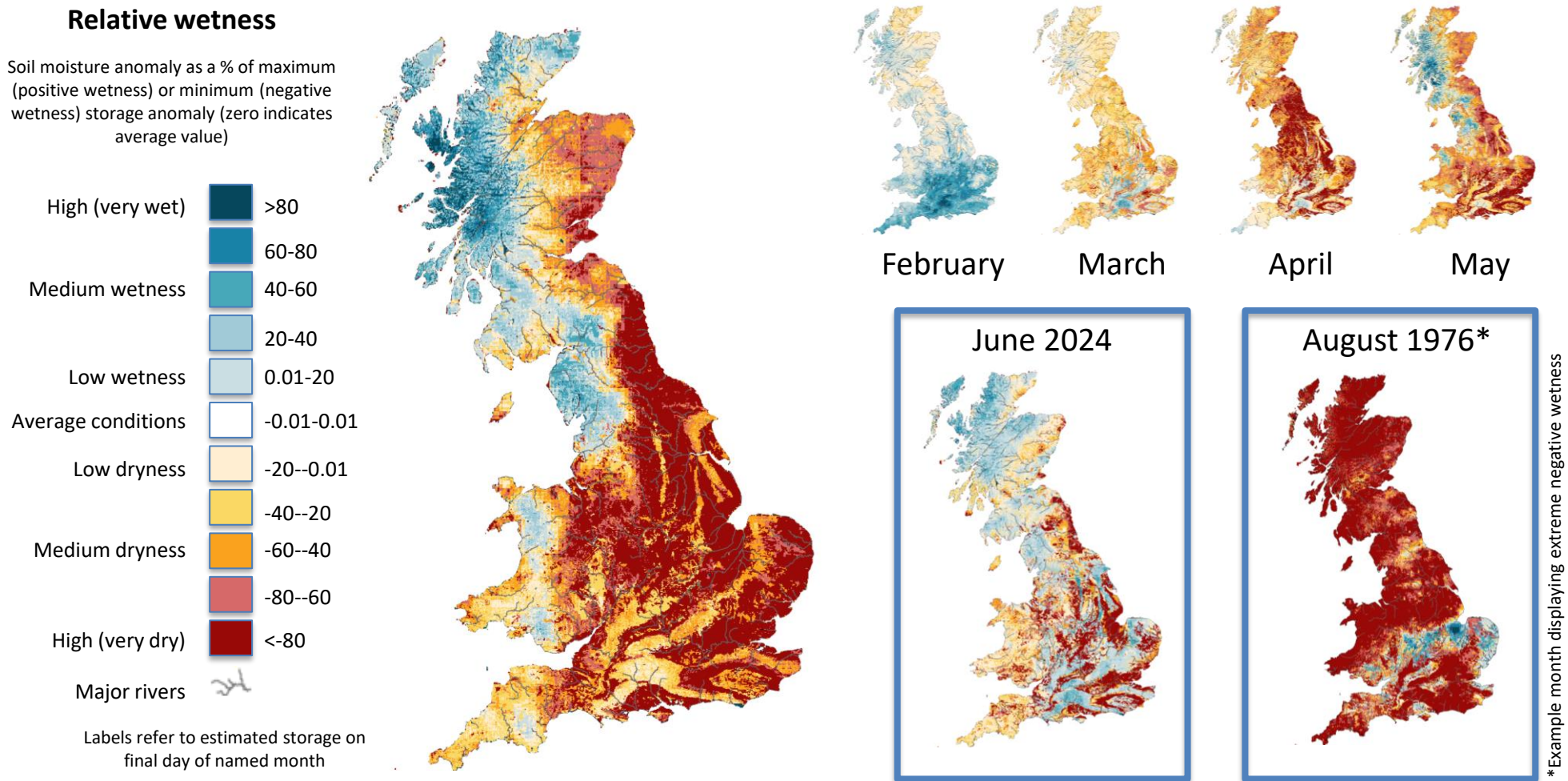
Current Daily Simulated Soil Moisture Conditions

Based on soil moisture estimated for 30 June 2025

Issue date: 07.07.2025

These maps are based on Grid-to-Grid (G2G) hydrological model simulated soil moisture, expressed as an anomaly from the historical monthly mean. To highlight areas that are particularly wet or dry, the soil moisture anomaly is presented relative to historical extremes. These maps are not a forecast; rather an indication of current conditions. Soil moisture will often look similar to total storage (shown on the previous slide), since total storage comprises both soil moisture and storage in the saturated zone.

SUMMARY: Soil water stores along the West Coast have been replenished by recent rainfall, resulting in low to medium wet stores. In the rest of the country, soil water stores continue to be very dry, with low to medium dryness in the deeper aquifers.



Estimate of Additional Rainfall Required to Overcome Dry Conditions

Based on subsurface water storage estimated for 30 June 2025

Issue date: 07.07.2025

These maps show the Grid-to-Grid (G2G) hydrological model simulated subsurface water storage, expressed as an anomaly from the historical monthly mean (1981-2010), presented on a 1km grid and as regional means. Subsurface storage deficits, i.e. where the subsurface water storage anomaly is less than zero, are highlighted in red/pink.

The subsurface storage deficit (mm) can be interpreted as an estimate of additional rainfall that would be required in future months to overcome dry conditions (i.e. rainfall in addition to what is expected on average). Regional mean values of additional rainfall required are provided in the table below.

Regional estimate of additional rainfall required (mm)

SCOTLAND

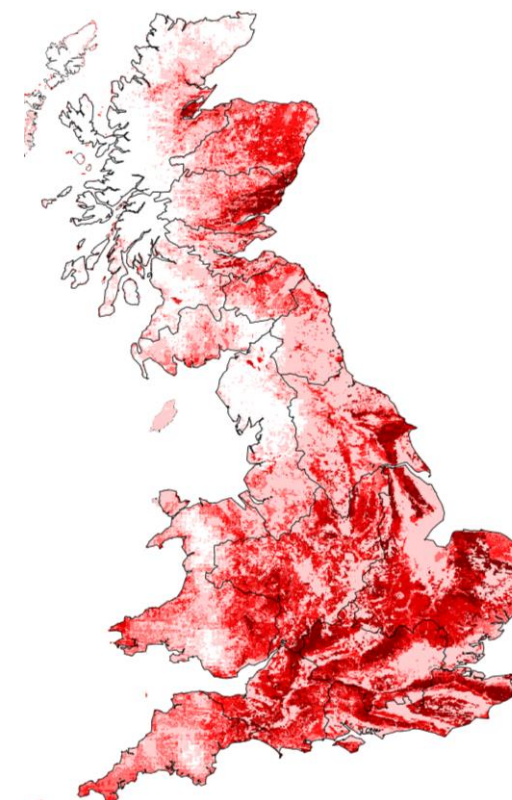
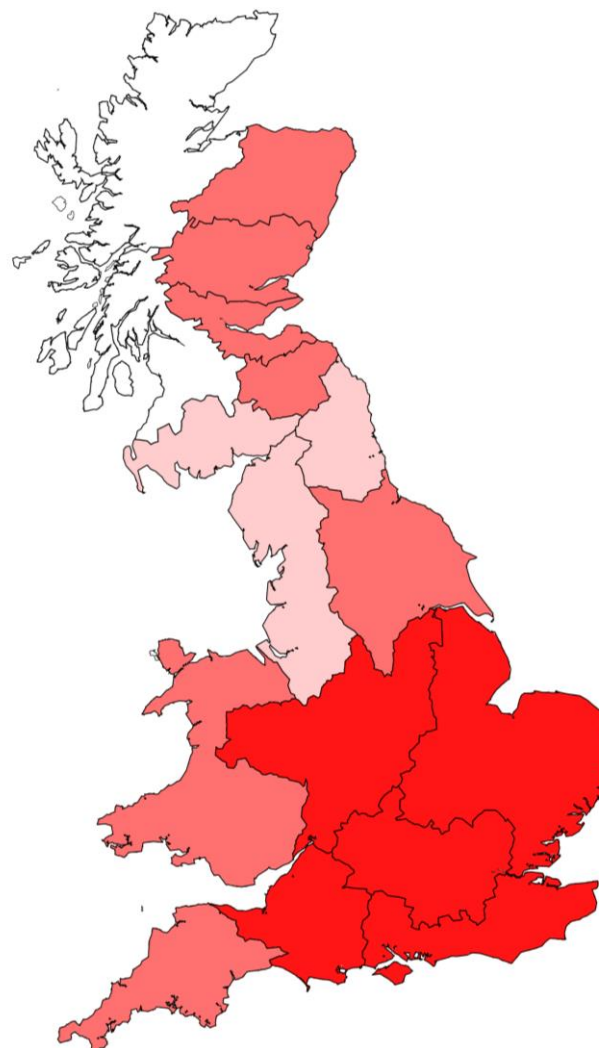
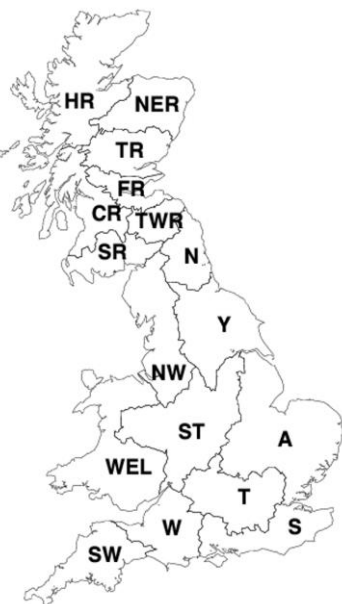
0	HR	Highlands Region
45	NER	North East Region
44	TR	Tay Region
27	FR	Forth Region
0	CR	Clyde Region
28	TWR	Tweed Region
5	SR	Solway Region

ENGLAND

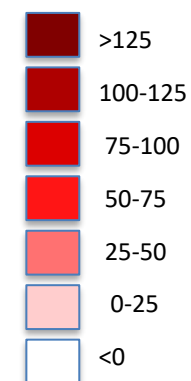
20	N	Northumbria
3	NW	North West
38	Y	Yorkshire
53	ST	Severn Trent
60	A	Anglian
66	T	Thames
64	W	Wessex
61	S	Southern
32	SW	South West

WALES

29	WEL	Welsh
----	-----	-------



Water storage deficit (anomaly; mm)



Return Period of Rainfall Required to Overcome Dry Conditions

Period: July 2025 - December 2025

Issue date: 07.07.2025

These maps show the return period of the rainfall required to overcome dry conditions simulated using the Grid-to-Grid (G2G) hydrological model. The maps are coloured according to the return period of accumulated rainfall required to overcome the estimated current subsurface water storage deficit over the next one to six months (areas with no storage deficit will always be white). These maps do not provide a drought forecast; instead they indicate whether particularly heavy rainfall would be required to return to normal conditions for the time of year.

SUMMARY: Subsurface water deficits have decreased in the northwest of the country, but have increased elsewhere, particularly in the southeast.

These deficits require unusually high rainfall to recover to normal levels by the end of the month. In the southeast of the country, unusually high rainfall is needed over the coming few months to recover to normal levels, particularly in the Anglian region.

SCOTLAND

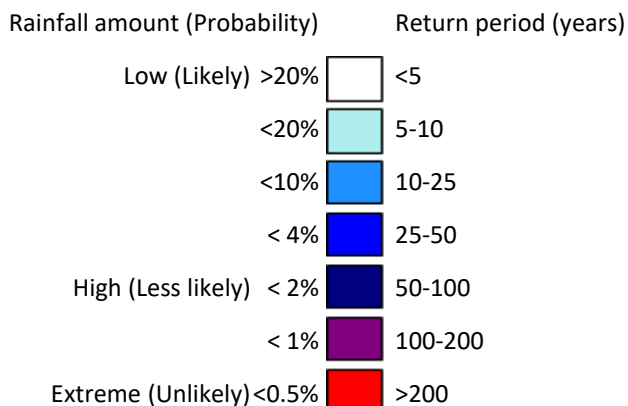
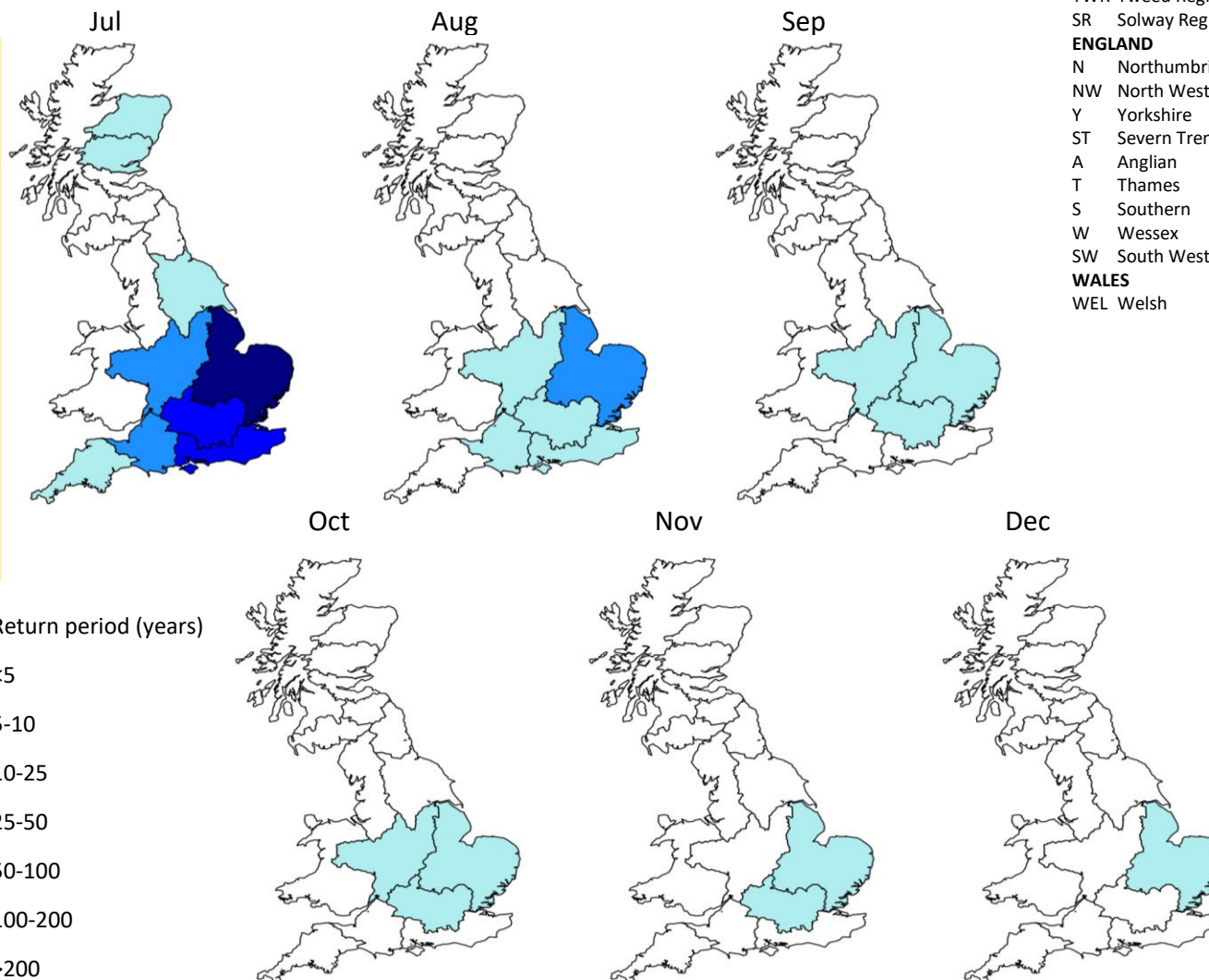
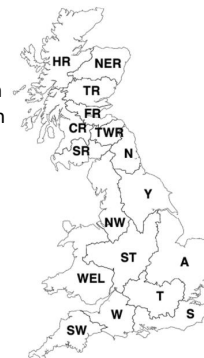
- HR Highlands Region
- NER North East Region
- TR Tay Region
- FR Forth Region
- CR Clyde Region
- TWR Tweed Region
- SR Solway Region

ENGLAND

- N Northumbria
- NW North West
- Y Yorkshire
- ST Severn Trent
- A Anglian
- T Thames
- S Southern
- W Wessex
- SW South West

WALES

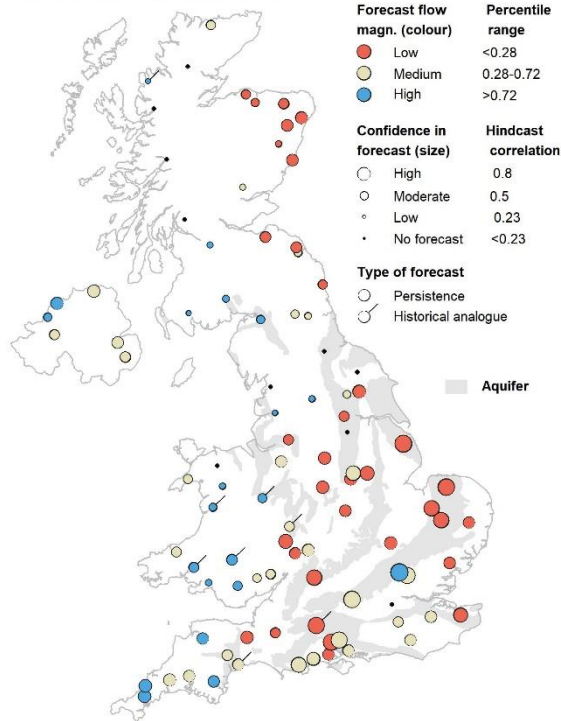
- WEL Welsh



SUMMARY:

The outlook for July and July–September indicates that river flows across England and eastern Scotland are expected to be in the below normal range. In contrast, flows in western regions and groundwater-fed catchments in south-east England are likely to be within the normal to above normal range.

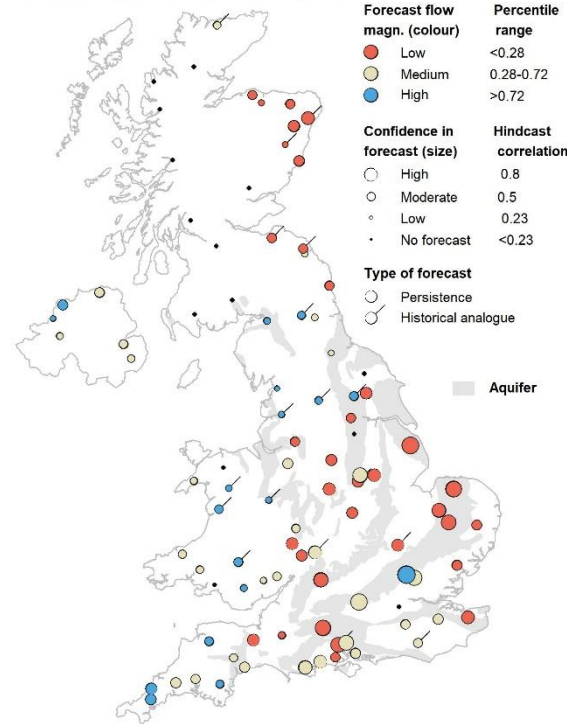
River flow outlook for Jul 2025



1-month flow outlook

Outlooks from hydrological analogues are based on a comparison of river flow during recent months with flows during the same months in previous years at a set of approximately 90 sites from across the UK. These sites are depicted on the two maps. Years with observed flows that most closely resemble current conditions are identified as the best analogues and the outlook is based on extrapolating from current conditions based on these analogues.

River flow outlook for Jul - Sep 2025



3-month flow outlook

It is, however, often the case that a simpler forecast based on the persistence of river flow provides a better forecast than provided by analogy. This is particularly true for slowly responding catchments associated with aquifer outcrops.

Both methods are considered at each site and the forecast from the method with the higher confidence is presented. A simple classification of flows is used (high, medium and low) as indicated by the colours of the dots, with the confidence

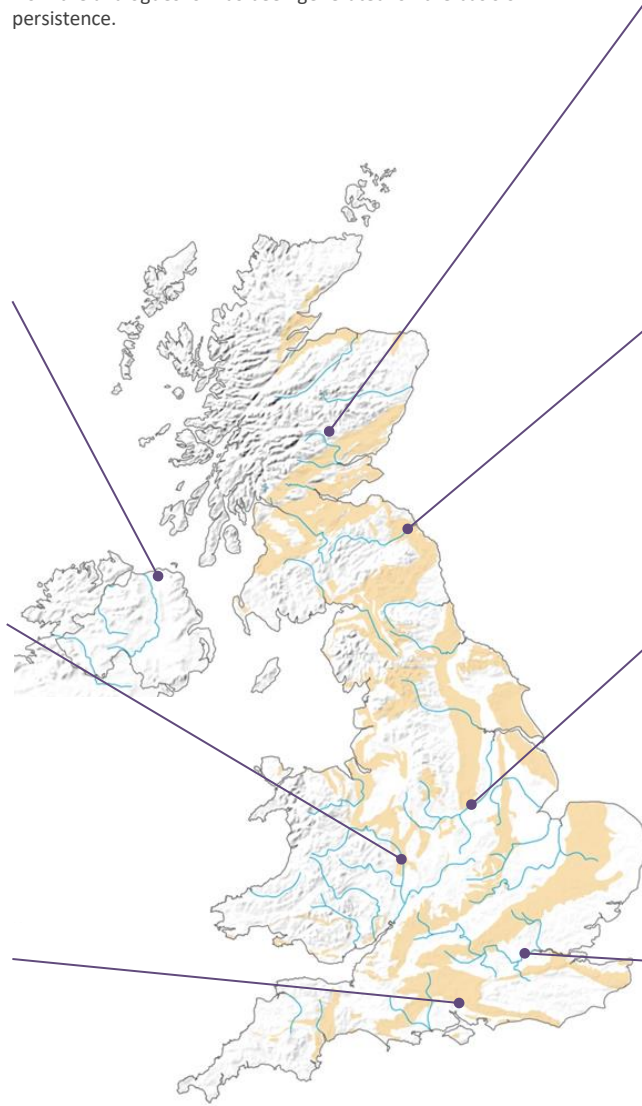
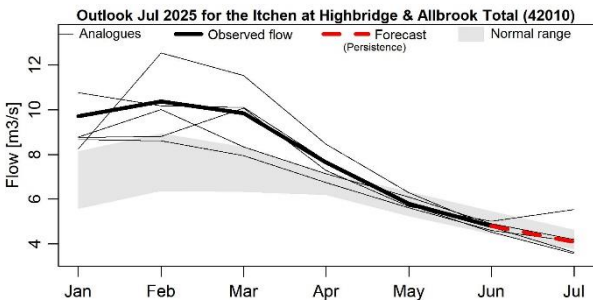
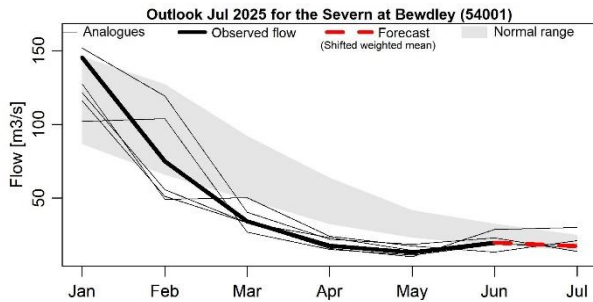
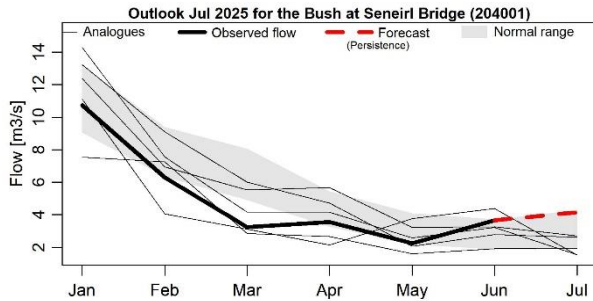
of the forecast being represented by the size of the dot. A tag on the dot indicates which method has been used in each instance.

Period: July 2025

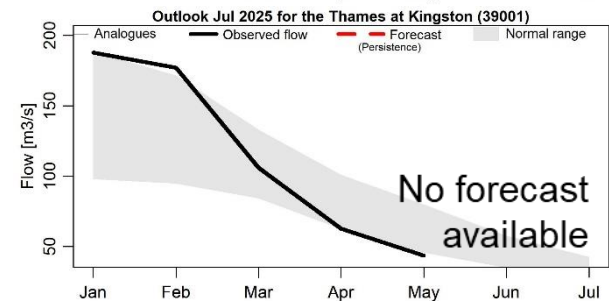
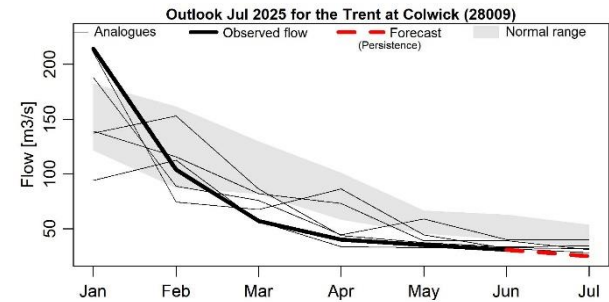
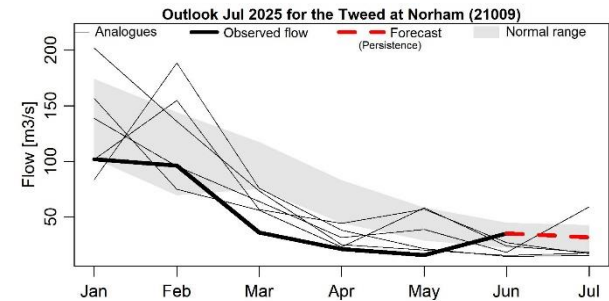
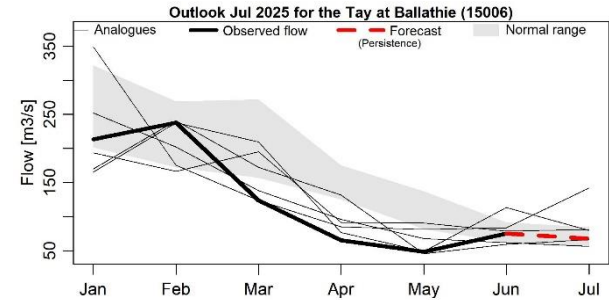
These figures provide insight into the hydrological analogue methodology for a set of sites from across the UK.

In each of the time series graphs the bold black line represents the observed flow during the past six months. The grey band indicates the normal flow range (the normal band includes 44%

of observed flows in each month). The selected analogues are shown as thin lines and the trajectories that flows took in the following month are also shown. The forecast is shown as the dashed red line, and in each plot it states whether this has come from the analogues or has been generated on the basis of persistence.



Issued on 09.07.2025 using data to the end of June 2025

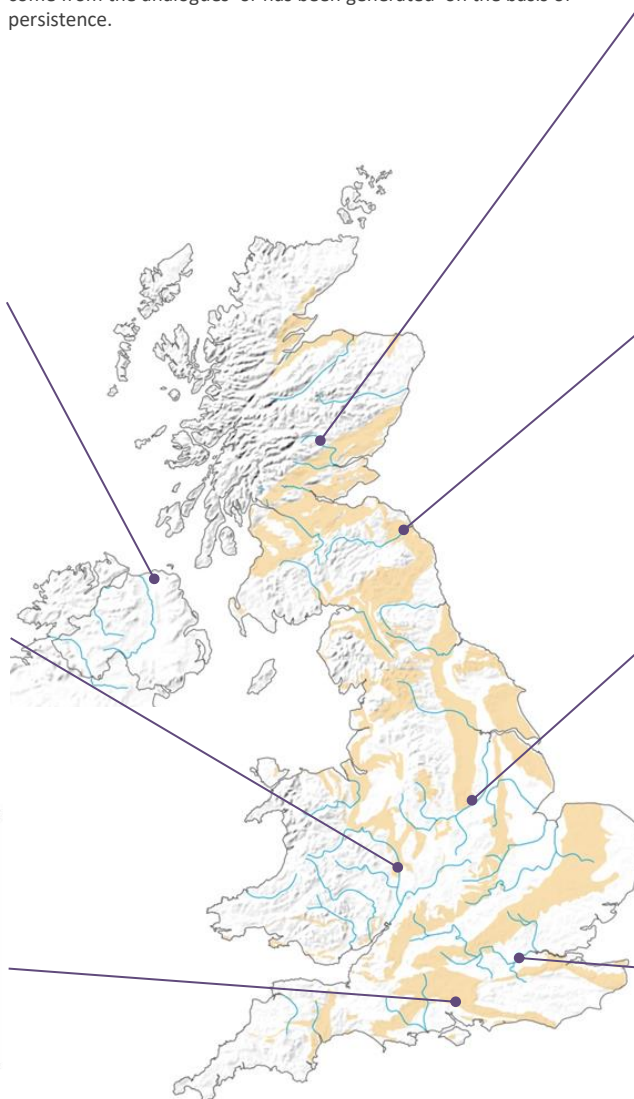
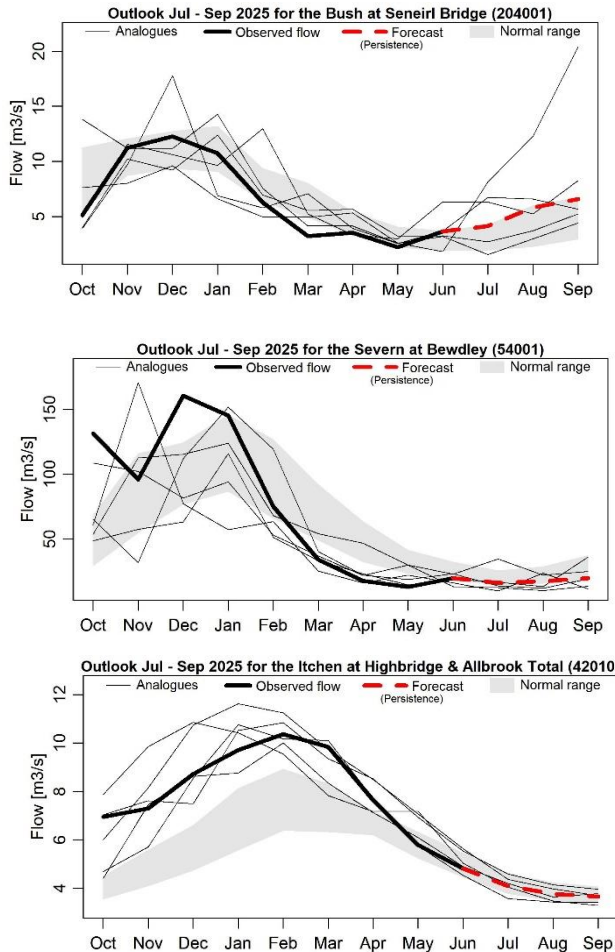


Period: July 2025 – September 2025

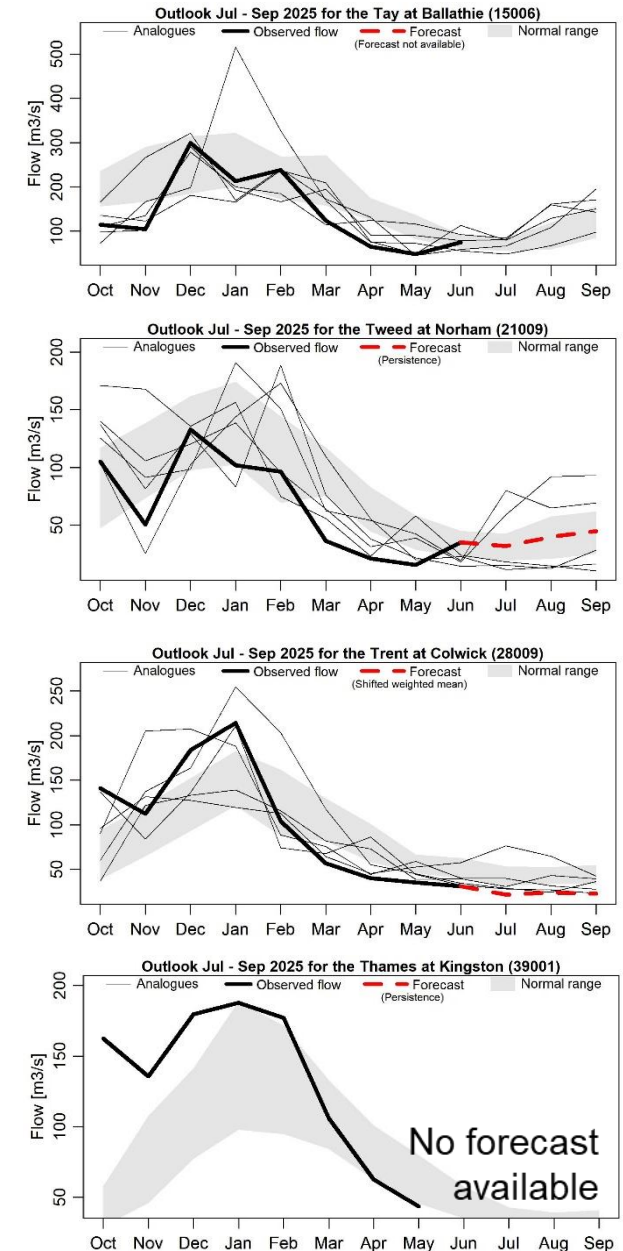
These figures provide insight into the hydrological analogue methodology for a set of sites from across the UK.

In each of the time series graphs the bold black line represents the observed flow during the past nine months. The grey band indicates the normal flow range (the normal band includes 44%

of observed flows in each month). The selected analogues are shown as thin lines and the trajectories that flows took in the following three months are also shown. The forecast is shown as the dashed red line, and in each plot it states whether this has come from the analogues or has been generated on the basis of persistence.



Issued on 09.07.2025 using data to the end of June 2025

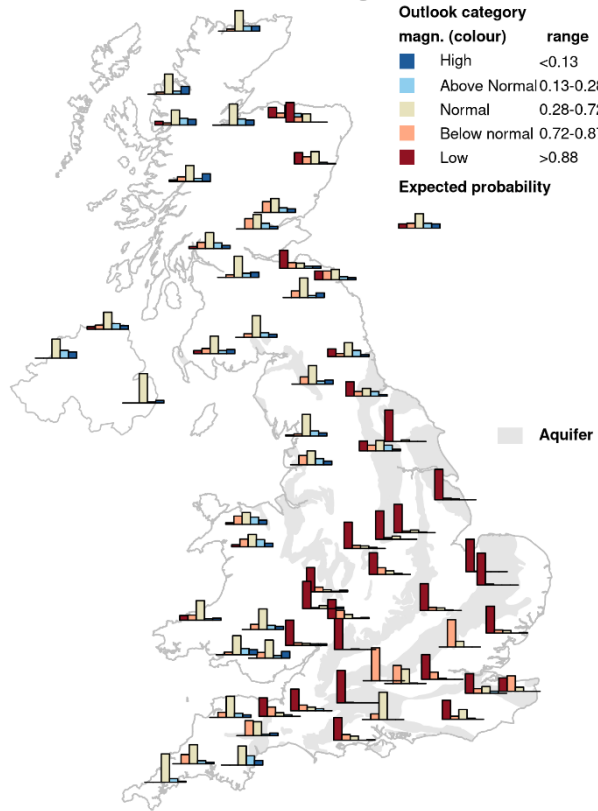


Period: July 2025 – December 2025

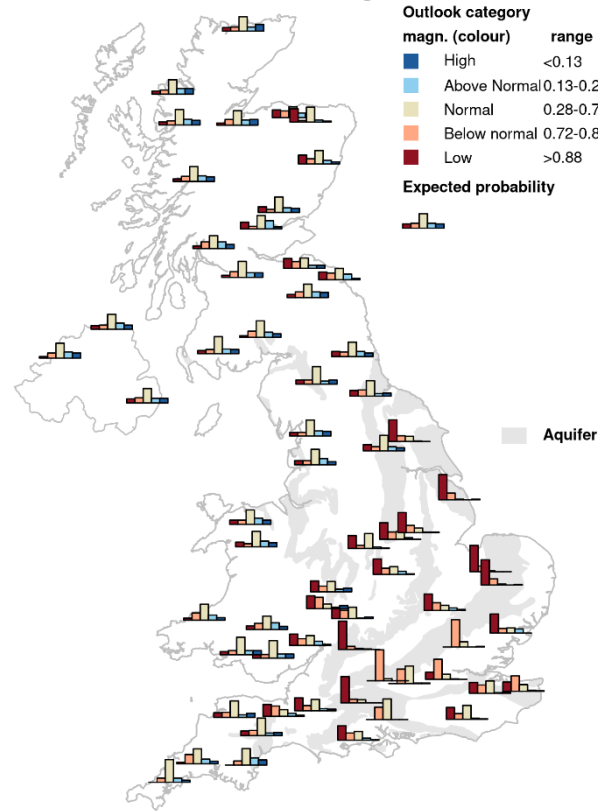
Issued on 03.07.2025 using data to the end of June 2025

The outlook for July indicates that flows are likely to be below normal to low across southern and central parts of England, and normal to below normal for eastern Scotland and north-eastern England. Flows are likely to be in the normal range elsewhere in the UK. The July to September outlook indicates that this pattern is likely to broadly continue, with the exception of central England where flows are likely to be normal to below normal.

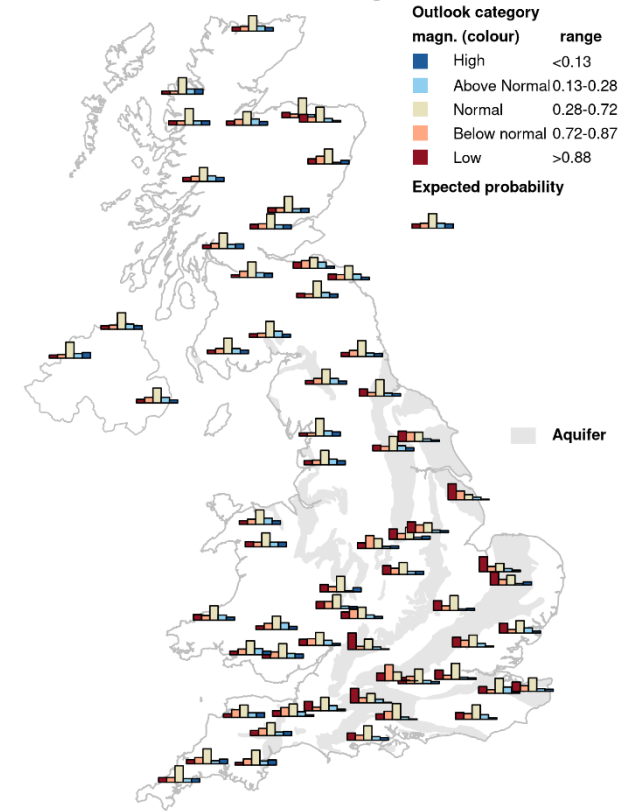
1-month river flow outlook starting Jul 2025



3-month river flow outlook starting Jul 2025



6-month river flow outlook starting Jul 2025

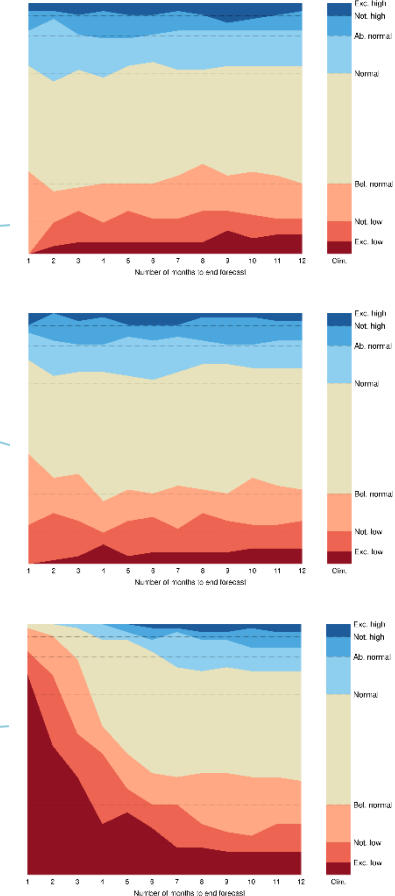
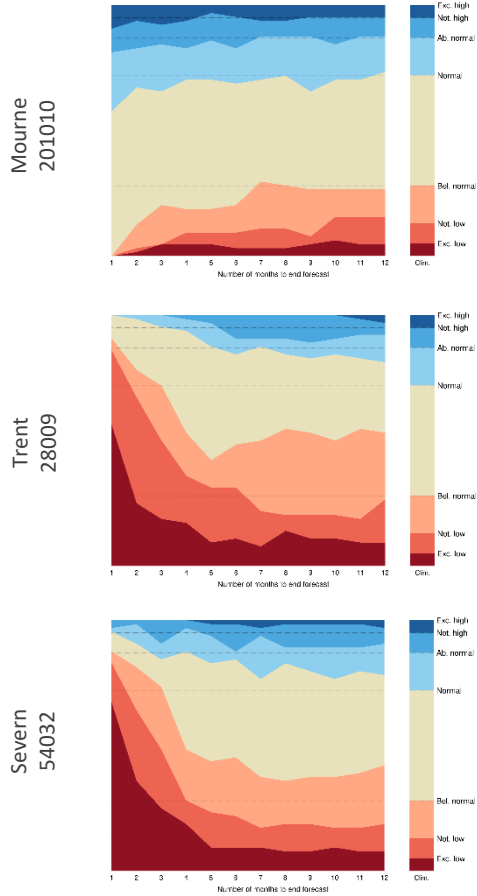
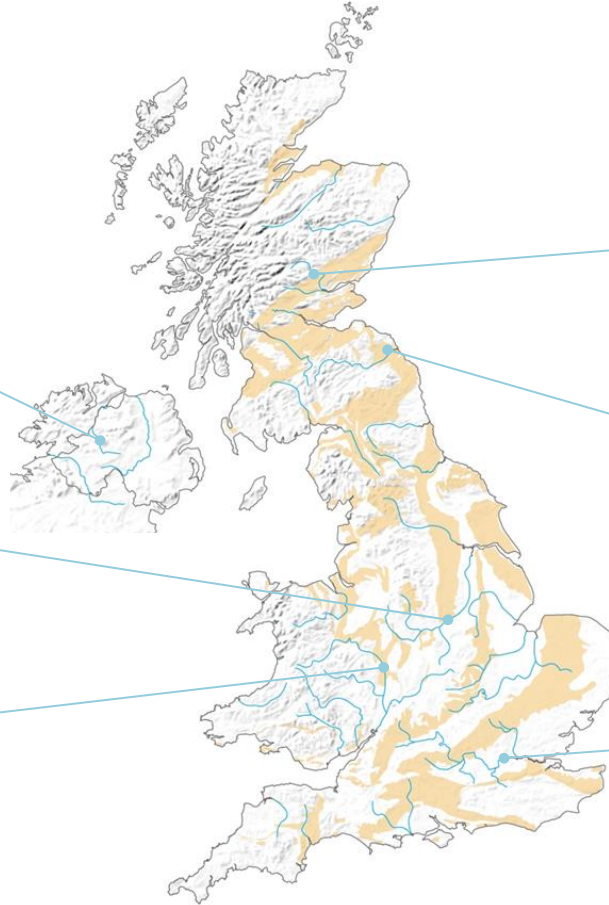


This outlook is based on monthly ensembles of historical sequences of observed climate (rainfall and potential evapotranspiration) that form input to a hydrological model. The outputs are probabilistic simulations of the average river flow over the forecast period (1 to 12 months ahead), at each location. The simulations are generated by the GR6J conceptual rainfall-runoff model from INRAE (France) calibrated on observed or naturalised flows.

The bar plot maps show the outlook distribution for 1, 3 and 6-month period for 64 catchments across England and Wales. Each bar plot represents the probabilistic distribution of the simulated river flow compared to the historical river flow, for the same n-month period. The probabilities fall within five categories, classified as: low, below normal, normal, above normal and high.

This outlook is based entirely on historical sequences and therefore does not contain any knowledge of the state of the atmosphere and ocean. It is hence possible that some of the historical sequences used might be inconsistent with current large-scale atmospheric conditions and would therefore be unlikely to occur in the next few months.

Please note that *Outlooks based on modelled flow from historical climate* from October 2023 onwards were generated using GR6J model, whereas until September 2023, they were produced using GR4J model. For more details, please see the section on River flow from historical climate at this link: <https://hydoutuk.net/about/methods/river-flows>



This outlook is based on monthly ensembles of historical sequences of observed climate (rainfall and potential evapotranspiration) that form input to a hydrological model. The outputs are probabilistic simulations of the average river flow over the forecast period (1 to 12 months ahead), at each location. The simulations are generated by the GR6J conceptual rainfall-runoff model from INRAE (France) calibrated on observed or naturalised flows.

The stack diagrams show the variation over time of the outlook distribution for a number of individual catchments. Each graph represents variation over time of the number of simulated river flows, in each month ensemble, that fall within each of seven categories: exceptionally low, notably low, below normal, normal, above normal, notably high and exceptionally high. The categories represent cumulative flow conditions, e.g. For 3-month, the simulated total 3-month flow compared to the historical 3-month flow distribution. The monthly variations can be compared to the long-term average distribution of river flows (shown as columns

on the right of each timeline graph).

This outlook is based entirely on historical sequences and therefore does not contain any knowledge of the state of the atmosphere and ocean. It is hence possible that some of the historical sequences used might be inconsistent with current large-scale atmospheric conditions and would therefore be unlikely to occur in the next few months.

Outlook based on modelled flow using historical weather analogues

Period: July 2025 – September 2025

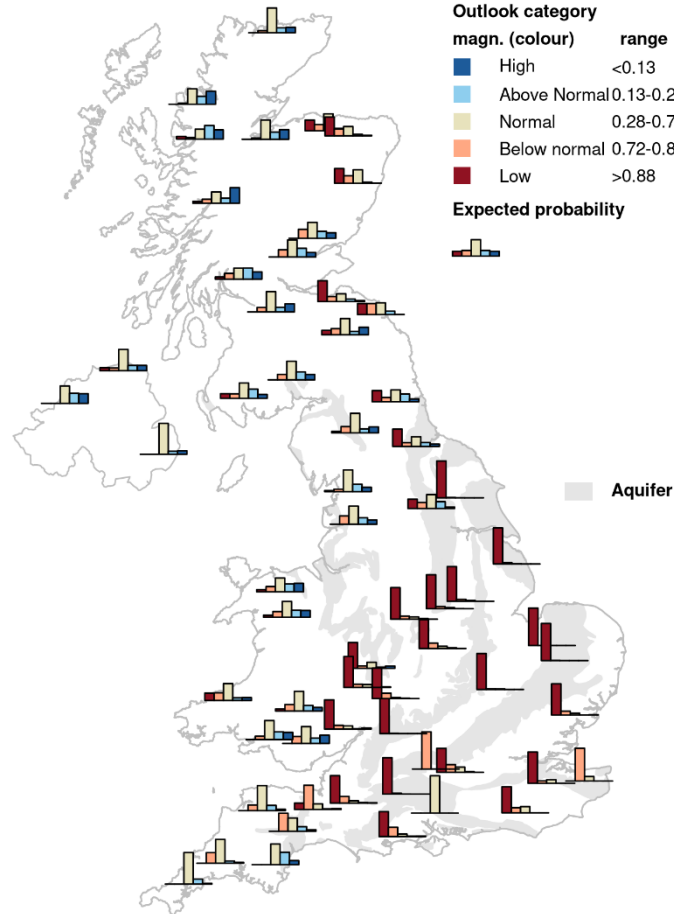
Issued on 03.07.2025 using data to the end of June 2025

The outlook for July indicates that flows are likely to be below normal to low across southern and central parts of England, and normal to below normal for eastern Scotland and north-eastern England. For western Scotland, flows are likely to be normal to above normal. Elsewhere, flows are likely to be in the normal range. The July to September outlook indicates that flows will continue to be below normal to low across southern and central England. Flows in western Scotland are likely to be normal to below normal, and flows elsewhere are likely to be in the normal range.

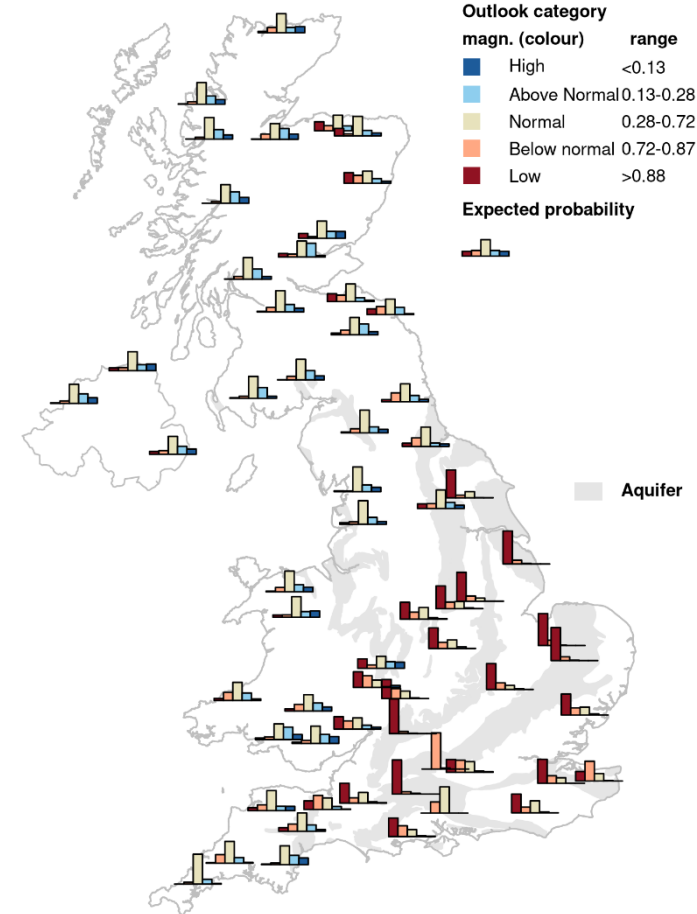
The historical weather analogues method uses Met Office predictions of average weather 1 and 3 months ahead to provide inputs to a hydrological model. Like the ESP method, observed rainfall and temperature data from past years are used to drive the predictions, however, the analogue method constrains the selection of past rainfall using the weather conditions in the meteorological forecasts (which are summarised for this forecast in the Met Office likelihood of impacts blocks underneath the maps). For each member of the Met Office forecast ensemble, the 10 analogues that best match the predicted average weather pattern (surface pressure map) over the forecast period are selected. Precipitation and temperature sequences constructed from the selected analogue scenarios are corrected to account for historic trends and used as inputs to hydrological models. Here, the GR6J model is run using these inputs, creating an ensemble of hydrological forecasts.

The outputs shown in the maps are the likelihoods of different outcomes for the average river flow over the one-month and three-month forecast periods at each location. The outlooks maps show the distribution for 64 catchments across the United Kingdom. Each bar plot represents the likelihood of the simulated river flow compared to the historical river flow, for the same n-month period. The probabilities fall within five categories, classified as: low, below normal, normal, above normal and high. The expected climatological probability of ensemble members in each of these categories is shown under the legend.

1-month river flow outlook starting Jul 2025



3-month river flow outlook starting Jul 2025



Met Office 1-month likelihood of precipitation impact



© Crown copyright, Met Office

Met Office 3-month likelihood of precipitation impact

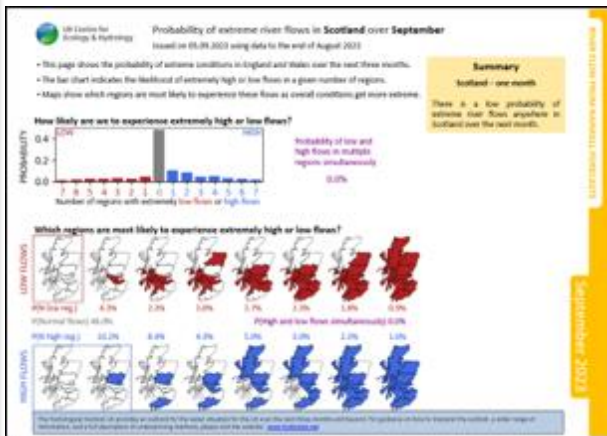


© Crown copyright, Met Office

Forecasts of river flows using Met Office rainfall forecasts

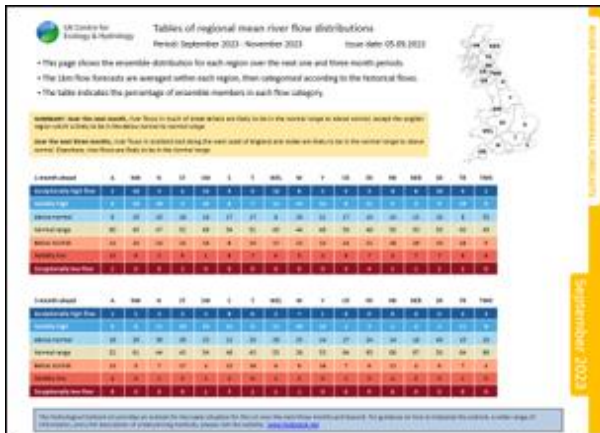
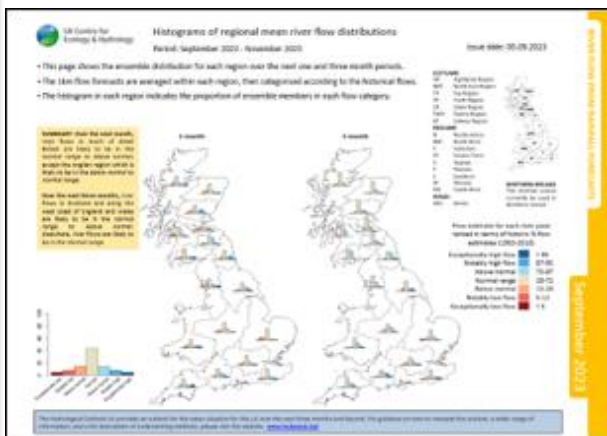
- These (yellow edged) pages summarise river flow forecasts produced by the UKCEH Water Balance Model.
- This model uses an ensemble of rainfall forecasts provided by the Met Office and a hydrological model to forecast river flows for the next one- and three-months ahead.
- A detailed description of these forecast products can be found on the final page, and a full technical description is given in the documentation available via the Hydrological Outlook website.
- Additional forecast products are available on the Hydrological Outlook Portal, via the website.

Probability of extreme river flows



- Use these pages if you are interested in extreme conditions across multiple regions.
- These pages summarise the risk of extremely high or low flows being observed across GB.
- The four pages show the risk for **Scotland** and for **England & Wales** over the next one and three months.
- The slides indicate the **probability of widespread extreme conditions** and which regions are most likely to experience extremely high or low flows.

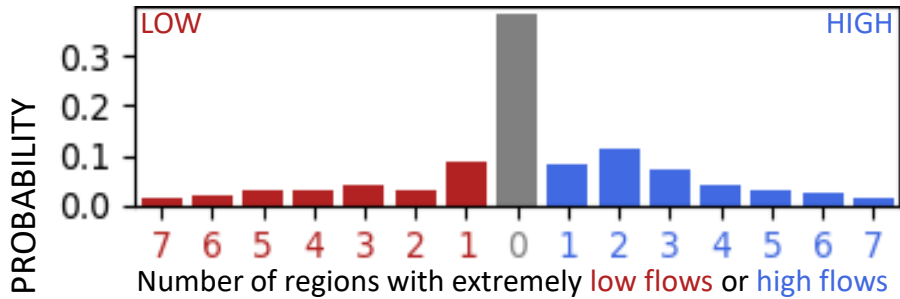
Regional mean river flow distributions



- Use these pages if you are interested in the ensemble distribution in a single region.
- The first page shows the ensemble distribution as a histogram for each region.
- The second page shows the percentage of ensemble members in each band for each region.

This page shows the **probability of extreme conditions in Scotland** over the next month. The bar chart indicates the likelihood of extremely high or low flows in a given number of regions. Maps show which regions are most likely to experience these flows as overall conditions get more extreme.

How likely are we to experience extremely low or high flows?



Probability of low and high flows in multiple regions simultaneously

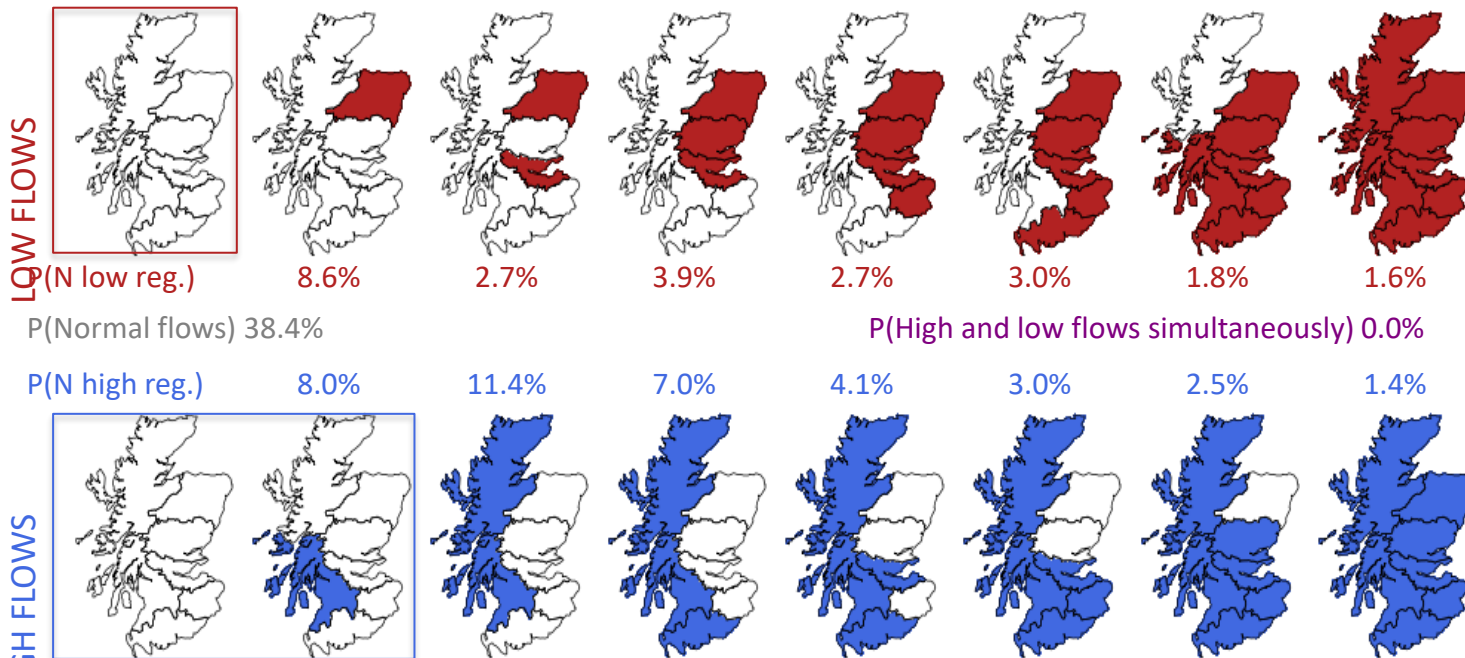
0.0%

Summary

Scotland – one month

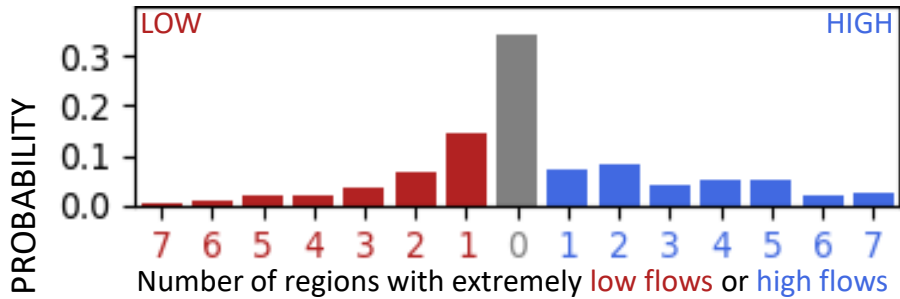
Extremely low flows are not likely in Scottish rivers over the next month. If extremely high flows occur, they are most likely in the west of Scotland.

Which regions are most likely to experience extremely low or high flows?



This page shows the **probability of extreme conditions in Scotland** over the next three months. The bar chart indicates the likelihood of extremely high or low flows in a given number of regions. Maps show which regions are most likely to experience these flows as overall conditions get more extreme.

How likely are we to experience extremely low or high flows?



Probability of low and high flows in multiple regions simultaneously

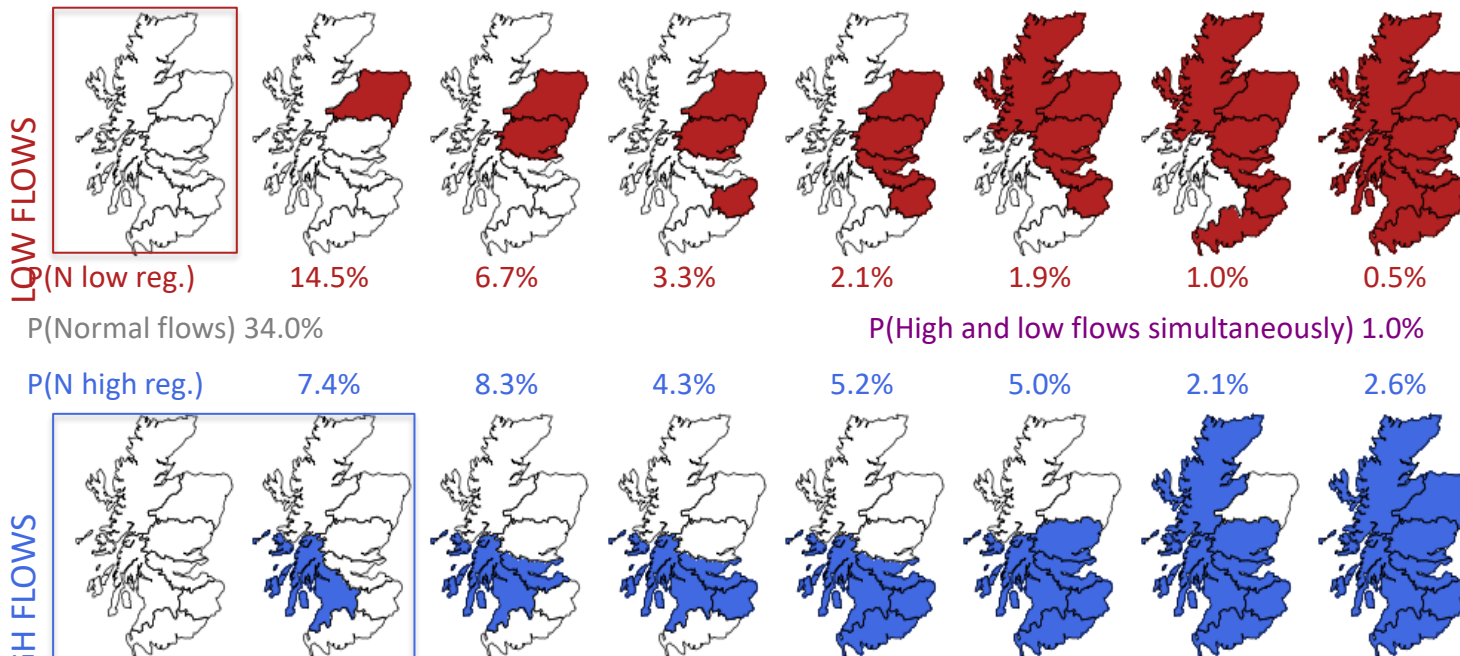
1.0%

Summary

Scotland – three months

Extremely low flows are not likely in Scottish rivers over the next three months. If extremely high flows occur, they are most likely in the west of Scotland.

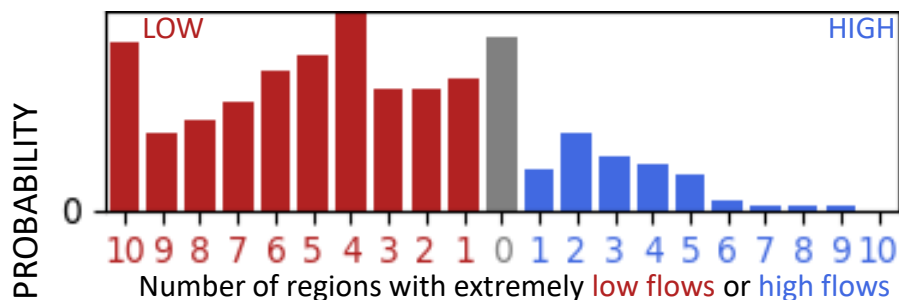
Which regions are most likely to experience extremely low or high flows?



This page shows the **probability of extreme conditions in England and Wales** over the next month. The bar chart indicates the likelihood of extremely high or low flows in a given number of regions. Maps show which regions are most likely to experience these flows as overall conditions get more extreme.

Summary
England and Wales – one month
 Over the next month, river flows in England are likely to be extremely low, especially in the southeast. In Wales, extreme low or high flows are not likely.

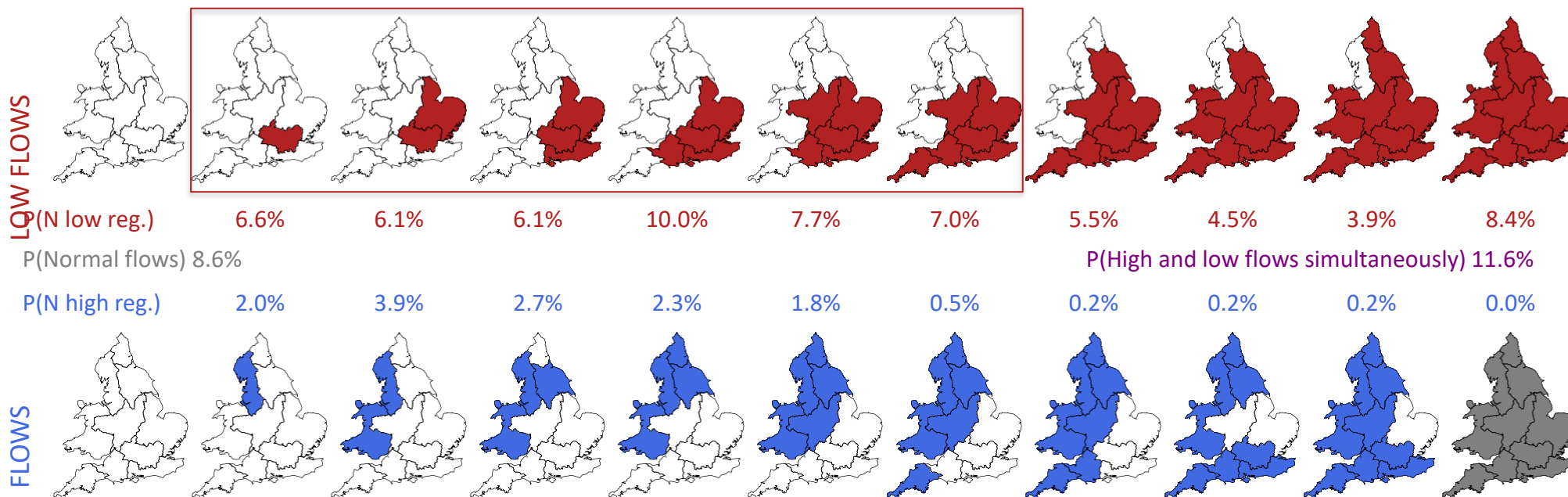
How likely are we to experience extremely low or high flows?



Probability of low and high flows in multiple regions simultaneously

11.6%

Which regions are most likely to experience extremely low or high flows?



P(High and low flows simultaneously) 11.6%

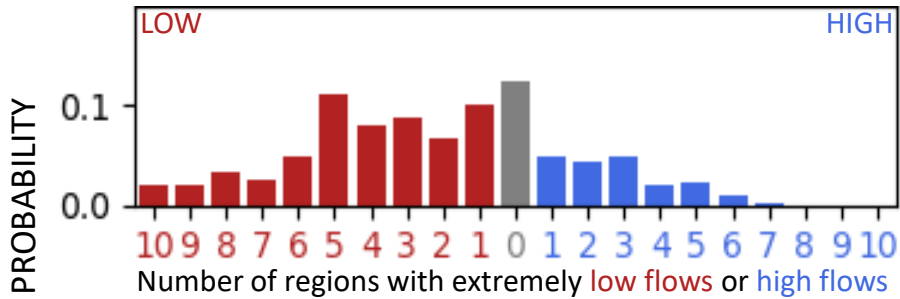
This page shows the **probability of extreme conditions in England and Wales** over the next three months. The bar chart indicates the likelihood of extremely high or low flows in a given number of regions. Maps show which regions are most likely to experience these flows as overall conditions get more extreme.

Summary

England and Wales – three months

Over the next three months, river flows in England are likely to be extremely low, especially in the southeast, where water stores have been depleted. In Wales, extreme low or high flows are not likely.

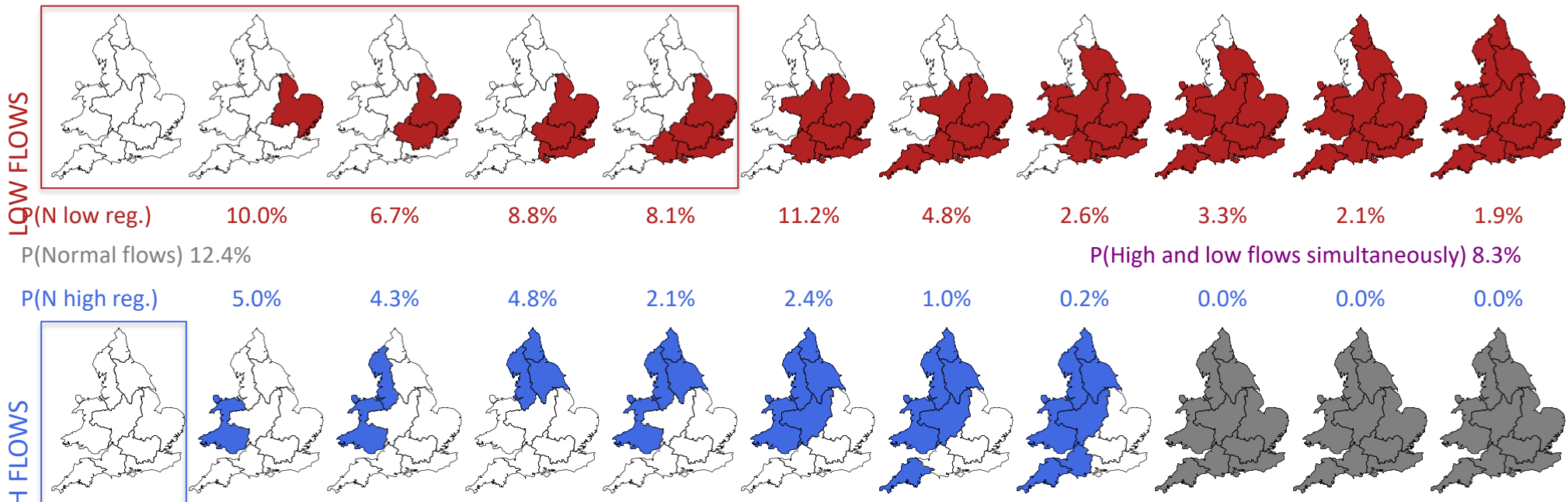
How likely are we to experience extremely low or high flows?



Probability of low and high flows in multiple regions simultaneously

8.3%

Which regions are most likely to experience extremely low or high flows?



Histograms of GB regional mean river flow distributions

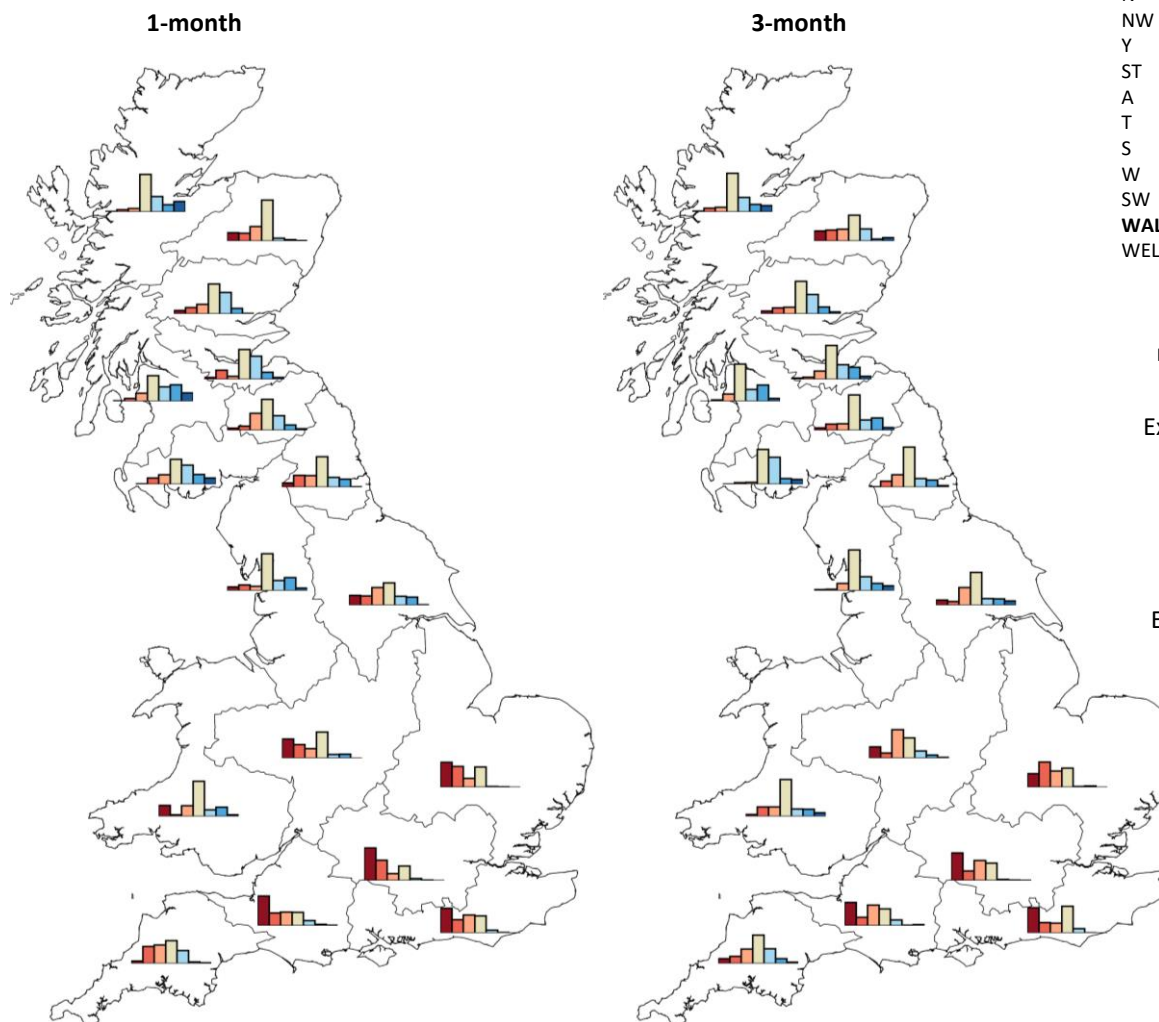
Period: July 2025 - September 2025

Issue date: 07.07.2025

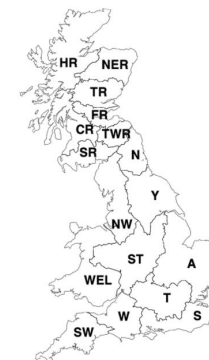
- This page shows **the ensemble flow distribution for each region** over the next 1- and 3-month periods.
- The 1km flow forecasts are averaged within each region, then categorised according to the historical flows.
- The histogram in each region indicates the proportion of ensemble members in each flow category.

SUMMARY: Over the next month, river flows in the southeast of the country are likely to be in the *extremely low to normal range*. Elsewhere, river flows are likely to be in the *normal range*.

Over the next three months, river flows in the southeast continue to be in the *extremely low to normal range*, with flows in the rest of the country expected to be in the *normal range*.

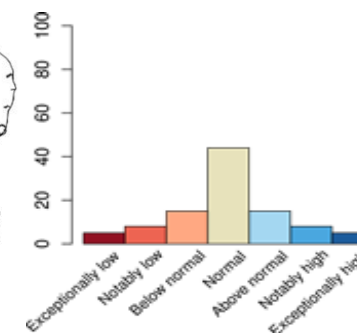


- SCOTLAND**
- HR Highlands Region
 - NER North East Region
 - TR Tay Region
 - FR Forth Region
 - CR Clyde Region
 - TWR Tweed Region
 - SR Solway Region
- ENGLAND**
- N Northumbria
 - NW North West
 - Y Yorkshire
 - ST Severn Trent
 - A Anglian
 - T Thames
 - S Southern
 - W Wessex
 - SW South West
- WALES**
- WEL Welsh



Flow estimate for each river pixel ranked in terms of historic % flow estimates (1963-2016)

Exceptionally high flow	> 95
Notably high flow	87-95
Above normal	72-87
Normal range	28-72
Below normal	13-28
Notably low flow	5-13
Exceptionally low flow	< 5

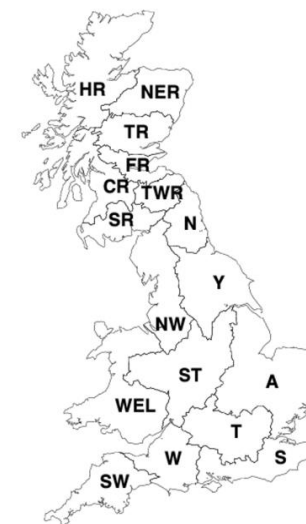


Tables of GB regional mean river flow distributions

Period: July 2025 - September 2025

Issue date: 07.07.2025

- This page shows **the ensemble flow distribution for each region** over the next 1- and 3-month periods.
- The 1km flow forecasts are averaged within each region, then categorised according to the historical flows.
- The table indicates the percentage of ensemble members in each flow category.



SUMMARY: Over the next month, river flows in the southeast of the country are likely to be in the *extremely low to normal range*. Elsewhere, river flows are likely to be in the *normal range*.

Over the next three months, river flows in the southeast continue to be in the *extremely low to normal range*, with flows in the rest of the country expected to be in the *normal range*.

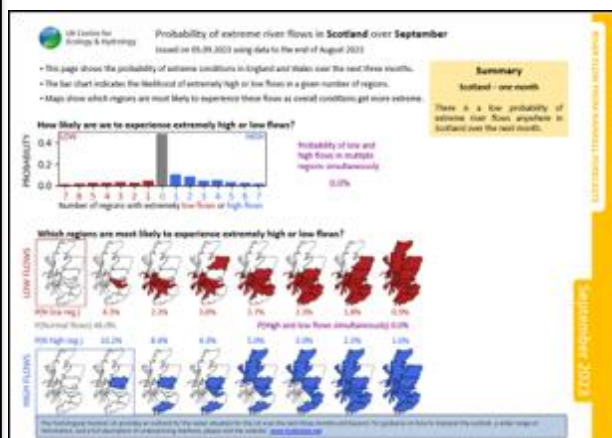
1-month ahead	A	NW	N	ST	SW	S	T	WEL	W	Y	CR	FR	HR	NER	SR	TR	TWR
Exceptionally high flow	0	3	1	0	1	0	0	2	1	0	11	2	14	0	8	0	2
Notably high	0	17	10	5	2	1	0	12	2	11	22	9	9	2	13	7	7
Above normal	1	13	13	5	17	4	3	9	7	12	19	30	20	4	25	28	19
Normal range	27	48	40	34	30	22	19	46	18	29	34	39	49	54	32	39	41
Below normal	12	6	15	12	24	23	9	14	18	23	10	4	4	19	12	12	22
Notably low	28	8	16	18	22	18	26	2	17	12	4	12	3	10	8	8	6
Exceptionally low flow	33	5	6	25	3	32	43	14	39	13	1	2	1	11	1	4	3

3-month ahead	A	NW	N	ST	SW	S	T	WEL	W	Y	CR	FR	HR	NER	SR	TR	TWR
Exceptionally high flow	0	6	2	1	2	0	0	5	1	6	4	4	8	4	6	2	4
Notably high	2	9	10	4	6	0	0	10	1	8	21	16	10	3	8	9	16
Above normal	1	18	11	10	20	6	1	10	8	9	16	20	19	16	36	26	14
Normal range	25	53	53	26	37	35	23	48	22	43	49	44	51	34	46	43	46
Below normal	21	9	16	37	19	13	26	13	27	23	9	11	6	16	3	9	9
Notably low	33	2	8	7	10	14	13	12	11	5	2	3	5	14	2	8	8
Exceptionally low flow	18	1	0	15	6	33	36	3	30	7	0	2	1	13	0	4	3

Forecasts of river flows using Met Office rainfall forecasts

- The data on these (yellow-bordered) pages are based on approximately 400 rainfall scenarios provided by the Met Office, which are used as inputs to a water balance hydrological model.
- River flow forecasts for every 1km grid cell are ranked according to the historical flow estimates and aggregated within each region.
- A full description of this method and these summary products is given in the technical documentation available via the Hydrological Outlook website.

Probability of extreme river flows



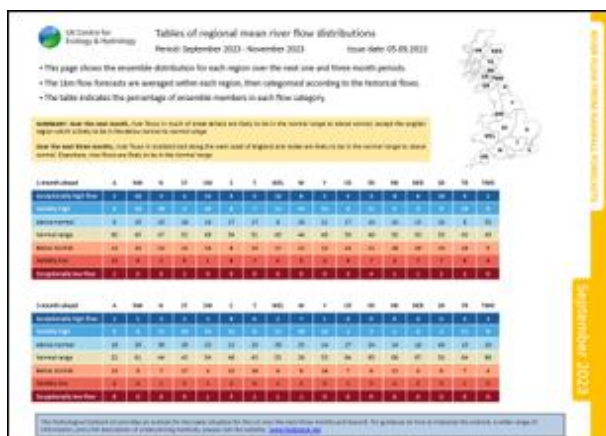
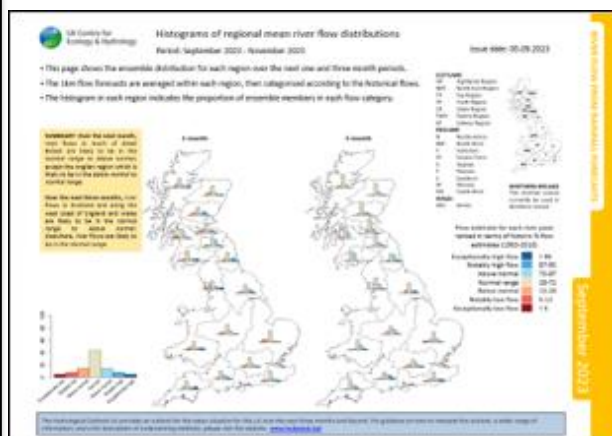
Extreme river flows are defined as those which rank in the lowest or highest 13% of historical flow estimates (1963 - 2016). This definition encompasses the 'Notably' and 'Exceptionally' high/low flow bands used elsewhere in the Outlook.

The bar chart shows the probability of a given number of regions experiencing extremely high/low flows, where scenarios showing both extremely high and extremely low flows in different regions simultaneously excluded. These probabilities are also shown beneath the maps.

Shaded regions on each map are those most likely to experience extreme flows from the set of scenarios with at least a given number of regions experiencing such flows. If shown, grey maps indicate scenarios not observed in the ensemble.

The box drawn around some maps spans the central 50% probability interval, excluding scenarios where extremely high/low flows are observed simultaneously. If these excluded cases constitute a significant probability, details are given in the yellow summary box.

Regional mean river flow distributions



The maps illustrate the ensemble distribution of regional mean river flows. The historical distribution is shown at bottom-left, and allows deviations from the normal distribution to be determined by comparing the forecast distribution to the historical distribution. A summary is given in the yellow box.

The table gives access to the data shown in the histograms. The numbers in the tables are the percentage of ensemble forecasts falling in each of the flow categories. As before results are averaged by region then ranked in terms of 54 years of historical regional flow estimates (1963 – 2016).

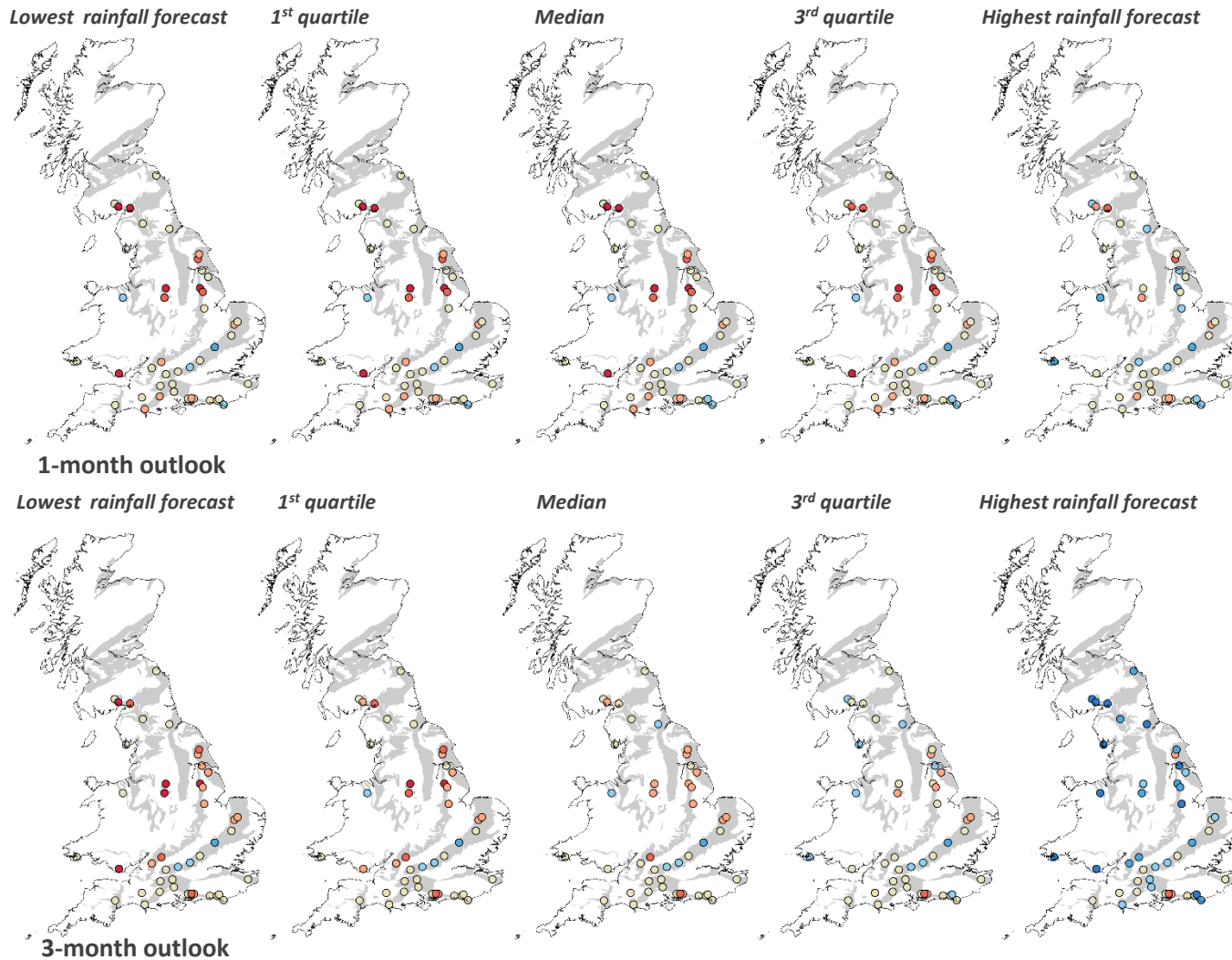
Period: July 2025 – September 2025

Issued on 05.06.2025 using data to the end of May

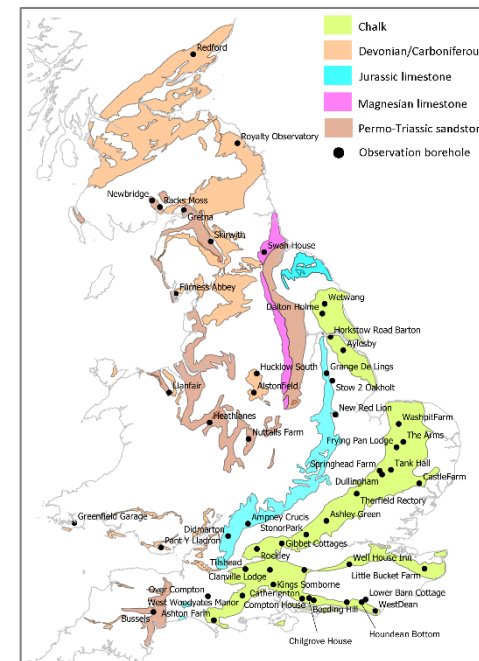
Under median rainfall conditions, groundwater levels over the next month are forecast to remain normal to below normal at most sites across the UK, although in parts of central and northern England and south Wales levels, notably low or exceptionally low levels are anticipated. In the southern Chalk aquifer, levels are expected to be between normal and below normal, with above normal levels limited to the slower responding boreholes. The 3-month forecast anticipates that similar conditions will persist, although levels will trend more towards normal.

These forecasts are produced by running five members of the Met Office ensemble climate forecast through groundwater models of observation borehole hydrographs at 42 sites across the country. The sites are distributed across the principal aquifers.

Based on the distribution of observed historical groundwater levels in a given month, seven categories have been derived for each site: very low, low, below normal, normal, above normal, high, and very high. The forecast groundwater level is assigned to one of these seven categories depending on where it falls within the distribution of the historically observed values.



Key	Percentile range of historic observed values for relevant month
Exceptionally high levels	> 95
Notably high levels	87-95
Above normal	72-87
Normal	28-72
Below normal	12-28
Notably low levels	5-13
Exceptionally low levels	< 5



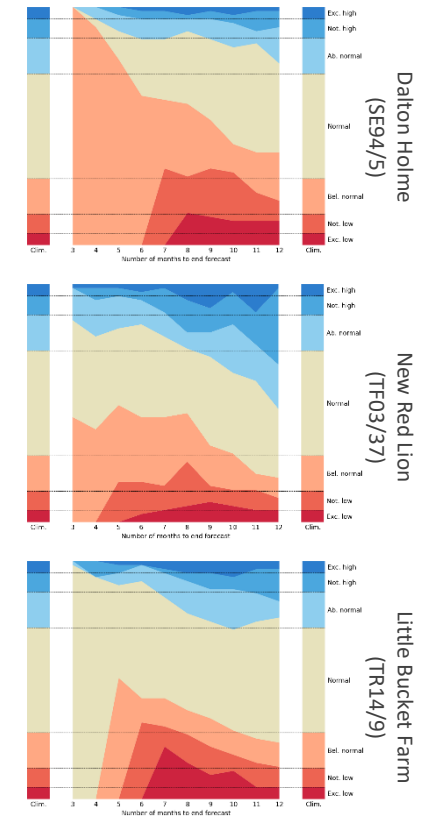
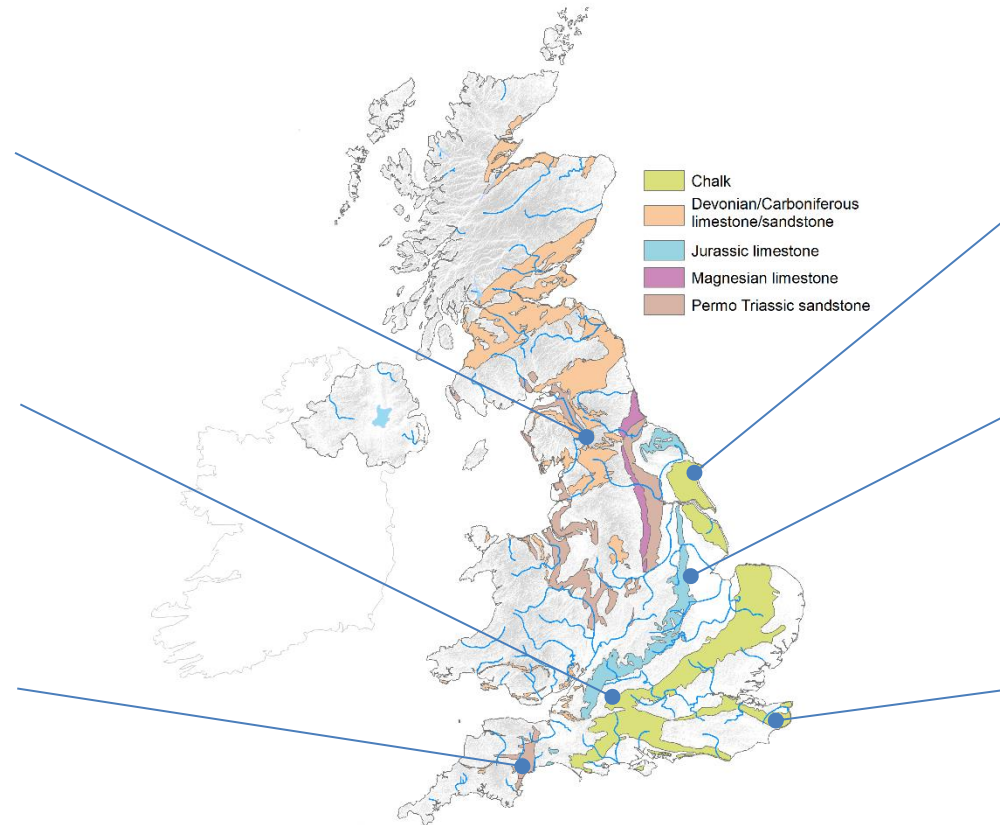
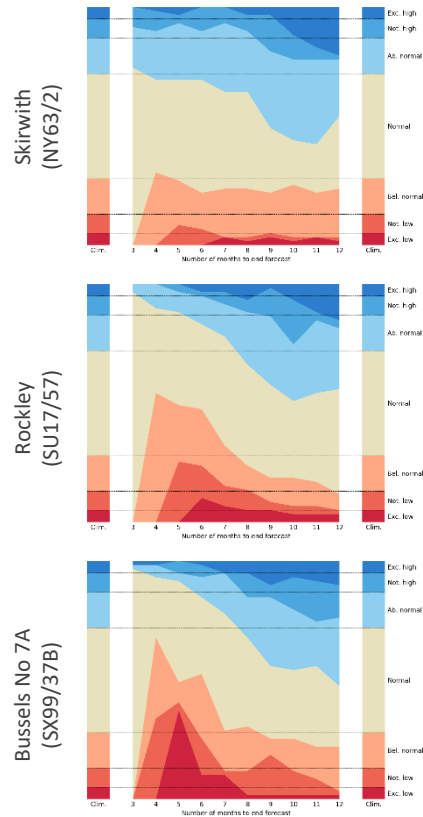
The Hydrological Outlook UK provides an outlook for the water situation for the UK over the next three months and beyond. For guidance on how to interpret the outlook, a wider range of information, and a full description of underpinning methods, please visit the website: www.hydoutuk.net

Outlook based on modelled groundwater from historical climate

Period: July 2025 – June 2026

Issued on 04.07.2025 using data to the end of June

For the next four months, in the Chalk at Little Bucket Farm and Rockley and in the Permo-Triassic Sandstone at Bussels No 7A and Skirwith, groundwater levels are likely to be normal to below normal for this time of year, with a chance of levels starting to trend toward normal in five to six months time. At New Red Lion in the Jurassic Limestone, levels are expected to be normal to below normal for the next ten months. At Dalton Holme in the Chalk, below normal levels are likely to persist over the next six to eight months, before a trend toward normal levels is anticipated.



This outlook is based on monthly ensembles of historical sequences of observed climate (rainfall and potential evapotranspiration) that form input to hydrological models. The outputs are probabilistic simulations of the average groundwater level over the forecast horizon (3 to 12 months ahead), at each location.

that fall within each the seven categories: exceptionally low, notably low, below normal, normal, above normal, notably high and exceptionally high. The monthly variations can be compared to the long-term average distribution of levels, which are shown as columns on the left and right of each graph.

the atmosphere and ocean. It is hence possible that some of the historical sequences used might be inconsistent with current large-scale atmospheric conditions and would therefore be unlikely to occur in the next few months.

The graphs show variation over time of the number of simulated groundwater levels in each monthly ensemble,

This outlook is based entirely on historical sequences and therefore does not contain any knowledge of the state of