

The regional maps illustrating the regional river flows for five members of the Met Office ensemble of rainfall forecasts give some indication of the range of possible river flows in the coming months. As noted previously, the actual flows could be more extreme than the flows generated by either the lowest or highest members of the rainfall ensemble.

The bar charts (below) give further insight into the range of river flow forecasts by considering all members of the forecast rainfall ensemble. The regional bar charts show the percentage of ensemble forecasts falling in each of the flow categories as generated by the monthly-resolution water-balance model. As before results are averaged by region then ranked in terms of 49 years of historical regional flow estimates (1962 – 2010).

SUMMARY: This month, following below average October rainfall for much of the UK it is likely that October river flows will be in the *Normal range* for October.

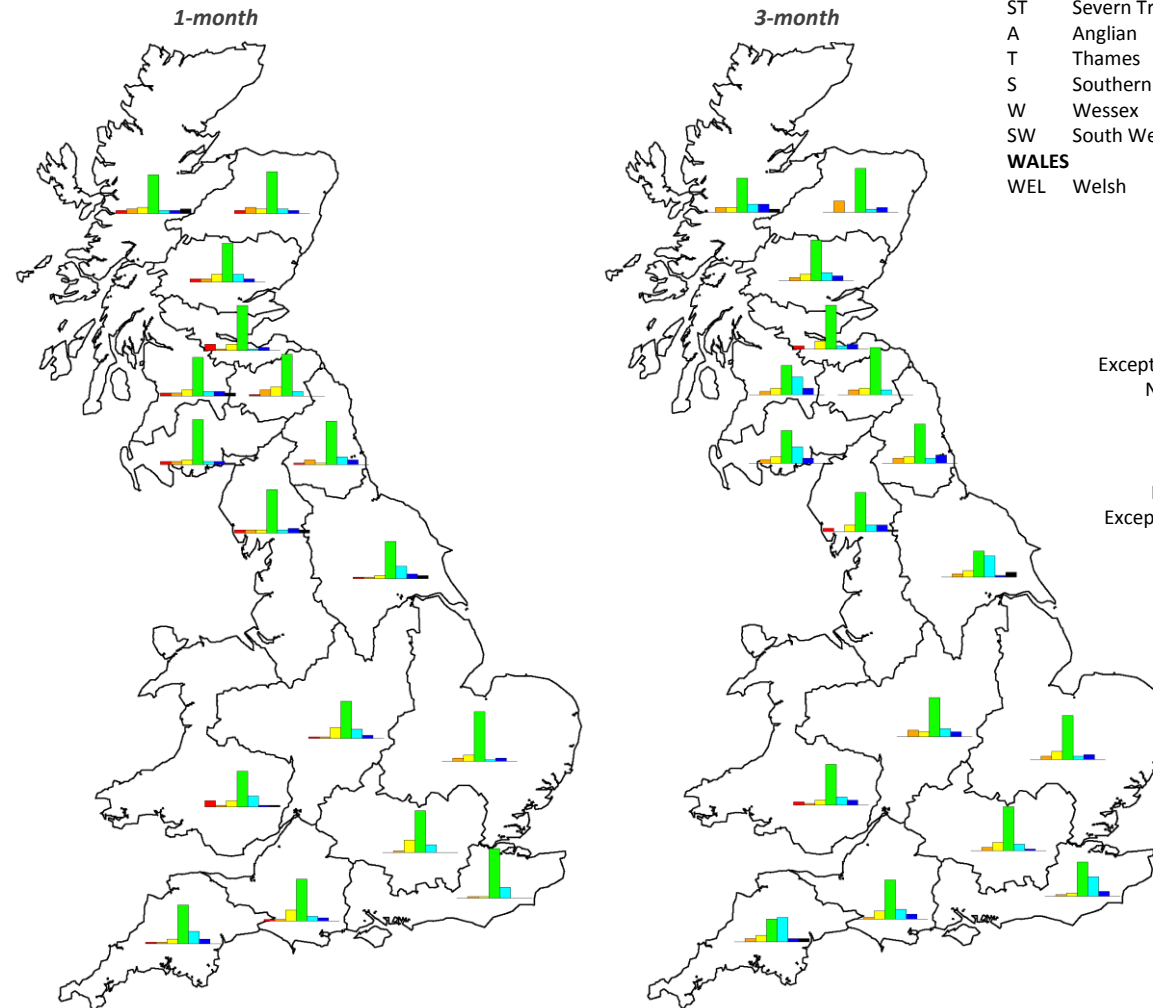
Over the next 3 months

There is a high chance of river flows being *Normal* or above for all regions.

- SCOTLAND**
 HR Highlands Region
 NER North East Region
 TR Tay Region
 FR Forth Region
 CR Clyde Region
 TWR Tweed Region
 SR Solway Region
- ENGLAND**
 N Northumbria
 NW North West
 Y Yorkshire
 ST Severn Trent
 A Anglian
 T Thames
 S Southern
 W Wessex
 SW South West
- WALES**
 WEL Welsh



NORTHERN IRELAND
 This method cannot currently be used in Northern Ireland



Percentile range of historic values for relevant month

