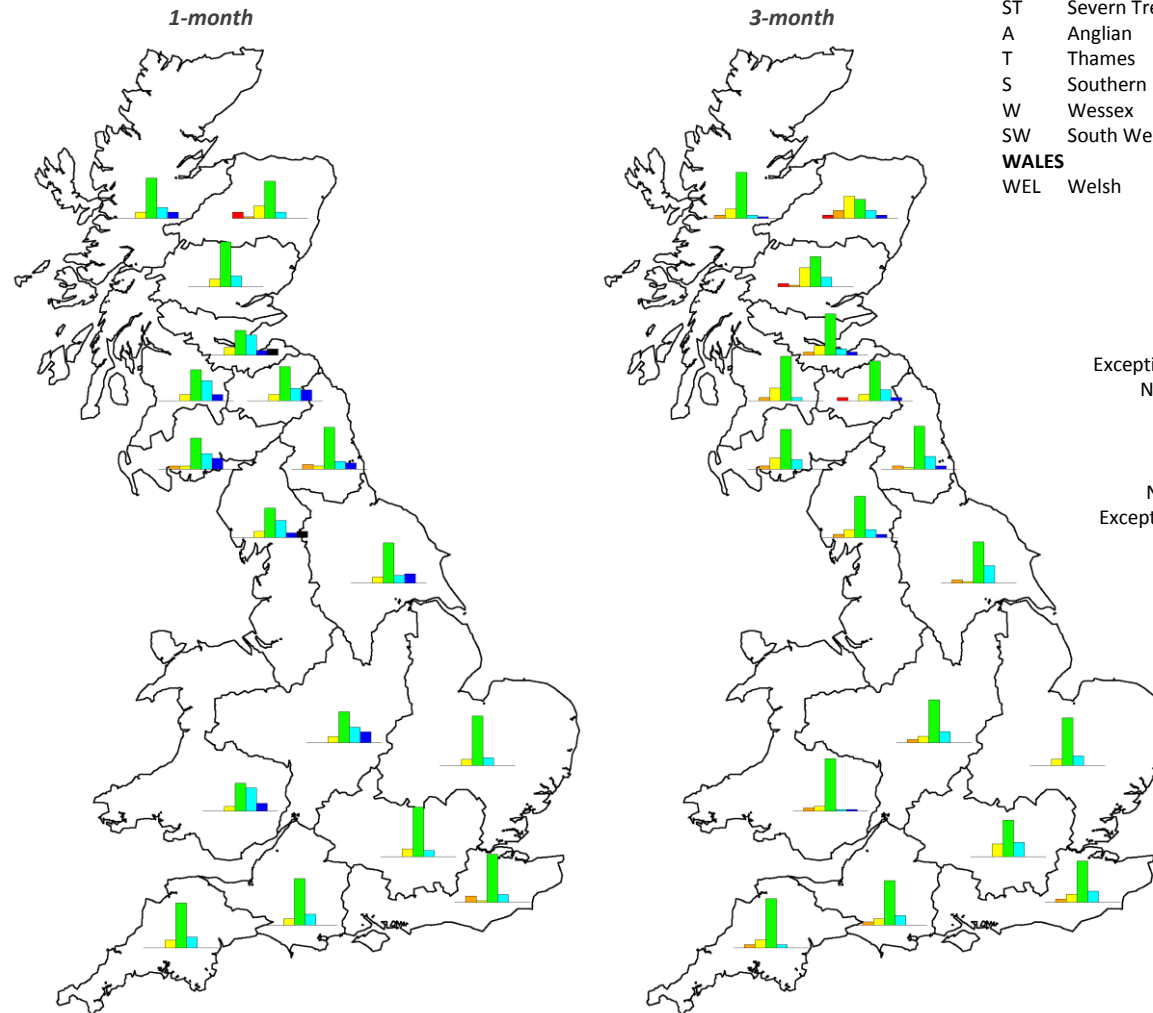
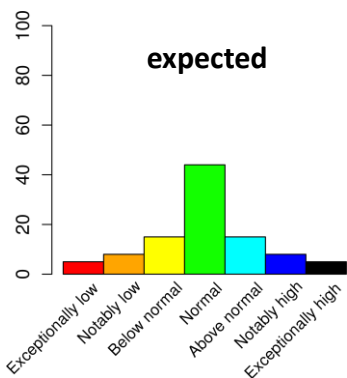


The regional maps illustrating the regional river flows for five members of the Met Office ensemble of rainfall forecasts give some indication of the range of possible river flows in the coming months. As noted previously, the actual flows could be more extreme than the flows generated by either the lowest or highest members of the rainfall ensemble.

The bar charts (below) give further insight into the range of river flow forecasts by considering all members of the forecast rainfall ensemble. The regional bar charts show the percentage of ensemble forecasts falling in each of the flow categories as generated by the monthly-resolution water-balance model. As before results are averaged by region then ranked in terms of 49 years of historical regional flow estimates (1962 – 2010).

SUMMARY: It is likely that March river flows will be in the *Normal range* or above for most of Britain.
Over the next 3 months it is likely that river flows in England will be in the *Normal range* or above. In Scotland it is likely that river flows will be in the *Normal range* or below.



SCOTLAND

- HR Highlands Region
- NER North East Region
- TR Tay Region
- FR Forth Region
- CR Clyde Region
- TWR Tweed Region
- SR Solway Region

ENGLAND

- N Northumbria
- NW North West
- Y Yorkshire
- ST Severn Trent
- A Anglian
- T Thames
- S Southern
- W Wessex
- SW South West

WALES

- WEL Welsh



NORTHERN IRELAND

This method cannot currently be used in Northern Ireland

Percentile range of historic values for relevant month

