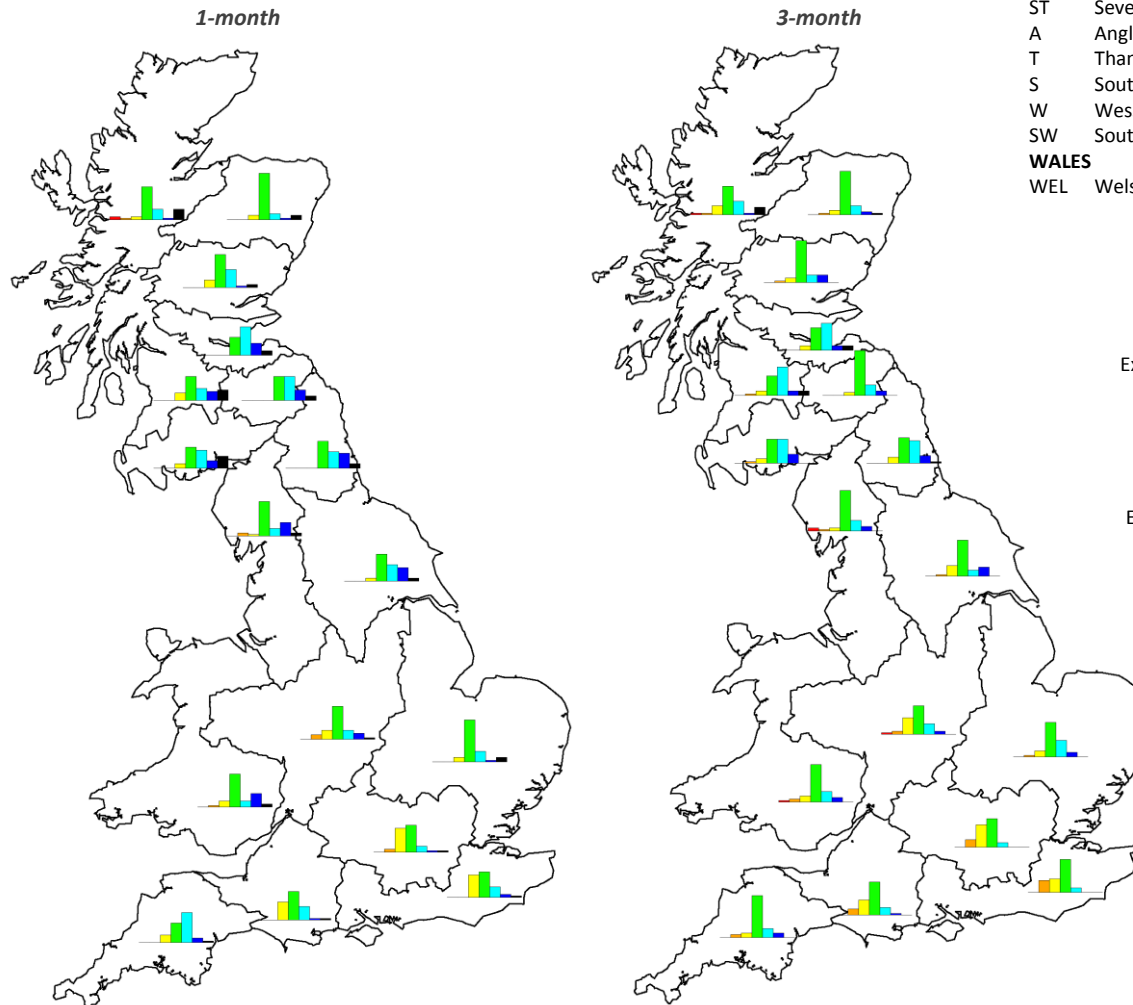
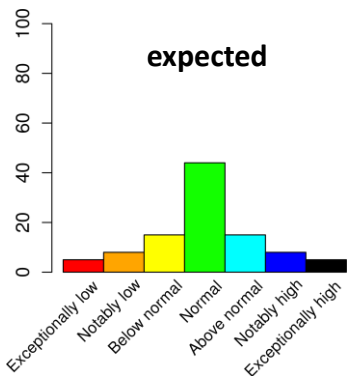


The regional maps illustrating the regional river flows for five members of the Met Office ensemble of rainfall forecasts give some indication of the range of possible river flows in the coming months. As noted previously, the actual flows could be more extreme than the flows generated by either the lowest or highest members of the rainfall ensemble.

The bar charts (below) give further insight into the range of river flow forecasts by considering all members of the forecast rainfall ensemble. The regional bar charts show the percentage of ensemble forecasts falling in each of the flow categories as generated by the monthly-resolution water-balance model. As before results are averaged by region then ranked in terms of 54 years of historical regional flow estimates (1963 – 2016).

**SUMMARY:** Following above average rainfall for June for many Northern and Western regions, it is likely that river flows for July will be in the *Normal range* or above in these areas. Elsewhere, (e.g. South East and Severn regions), following below normal rainfall in June, river flows are likely to be in the *Normal range* or below.

**Over the next 3 months** it is likely that that river flows will be in the *Normal range* or above for most regions, excepting Severn and South Eastern regions, where flows are most likely to be in the *Normal range* or below.



### SCOTLAND

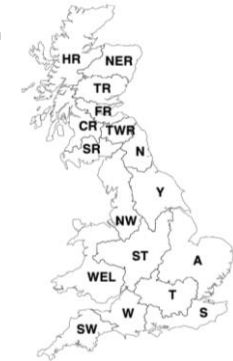
- HR Highlands Region
- NER North East Region
- TR Tay Region
- FR Forth Region
- CR Clyde Region
- TWR Tweed Region
- SR Solway Region

### ENGLAND

- N Northumbria
- NW North West
- Y Yorkshire
- ST Severn Trent
- A Anglian
- T Thames
- S Southern
- W Wessex
- SW South West

### WALES

- WEL Welsh



### NORTHERN IRELAND

This method cannot currently be used in Northern Ireland

Percentile range of historic values for relevant month

