



# Met Office 3-month Outlook

Met Office Period: October–December 2017 Issue date: 28.09.17

The forecast presented here is for October and the average of the October–November–December period for the United Kingdom as a whole. The forecast for October will be superseded by the long-range information on the public weather forecast web page ([www.metoffice.gov.uk/public/weather/forecast/#?tab=regionalForecast](http://www.metoffice.gov.uk/public/weather/forecast/#?tab=regionalForecast)), starting from 6 October 2017.

This forecast is based on information from observations, several numerical prediction systems and expert judgement.

### SUMMARY – PRECIPITATION:

For October and October–November–December above-average precipitation is more probable than below-average precipitation.

The probability that UK precipitation for October–November–December will fall into the driest of our five categories is around 20% and the probability that it will fall into the wettest of our five categories is around 30% (the 1981–2010 probability for each of these categories is 20%).

### CONTEXT:

Autumn is a season when it is usual for Atlantic depressions to become more intense. These systems bring large amounts of moisture, often making it one of the stormiest and wettest parts of the year (see figure P1).

As discussed in the temperature section, signals from the Met Office long-range prediction system, and other systems from prediction centres around the world, broadly show an increased likelihood of westerly or cyclonic weather patterns during the outlook period. Within this basic theme, however, some systems additionally

suggest an increased likelihood of high-pressure patterns over the North Atlantic. This would obstruct the path of the depressions approaching the UK to some extent. As a result, the outlook for October and October–November–December shows chances of above-average rainfall are moderately increased compared to normal (see shifts in figure P2). The outlook also implies that the risk of impacts from high rainfall and strong winds is greater than usual. Despite this, the risk of dry conditions, which is a concern for some following last winter's rainfall deficit, remains close to normal.

Fig P1

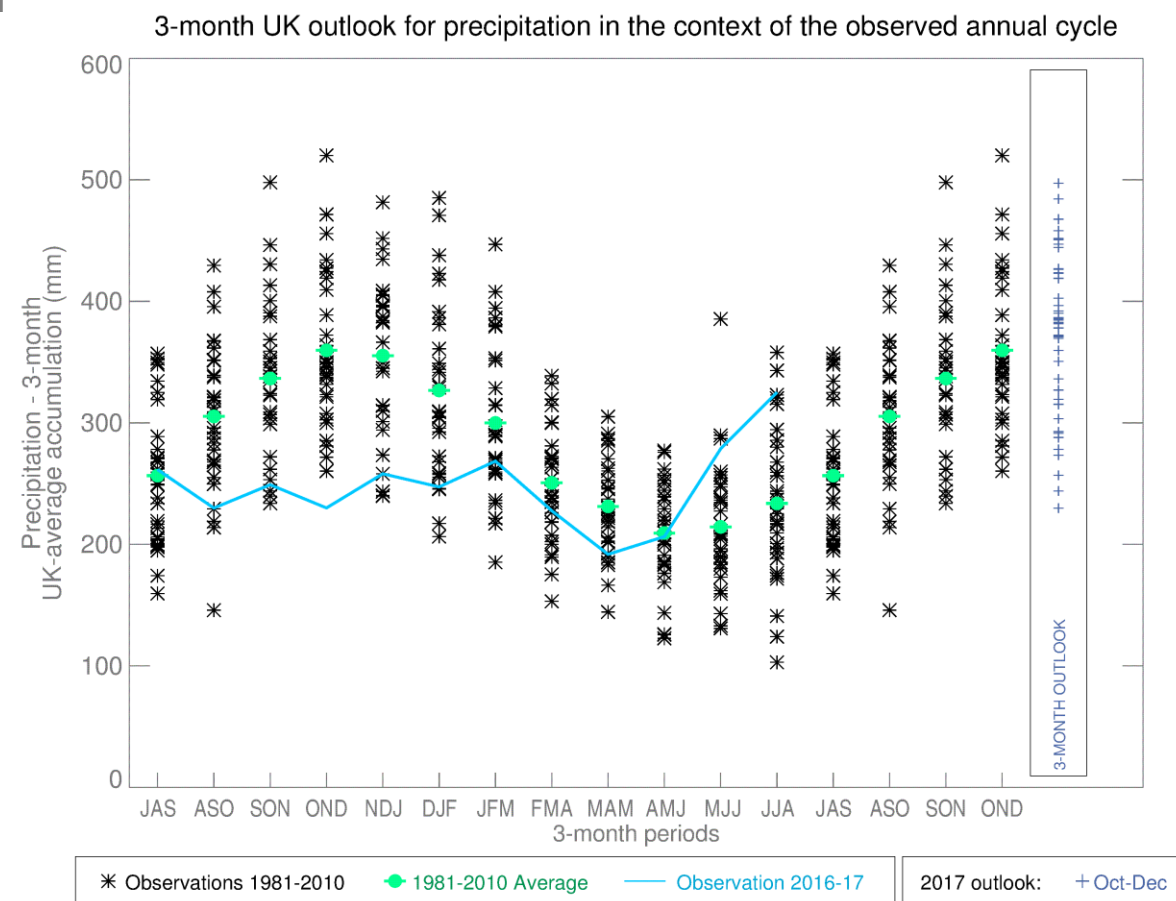


Fig P2

1-month and 3-month UK outlook for precipitation in the context of observed climatology

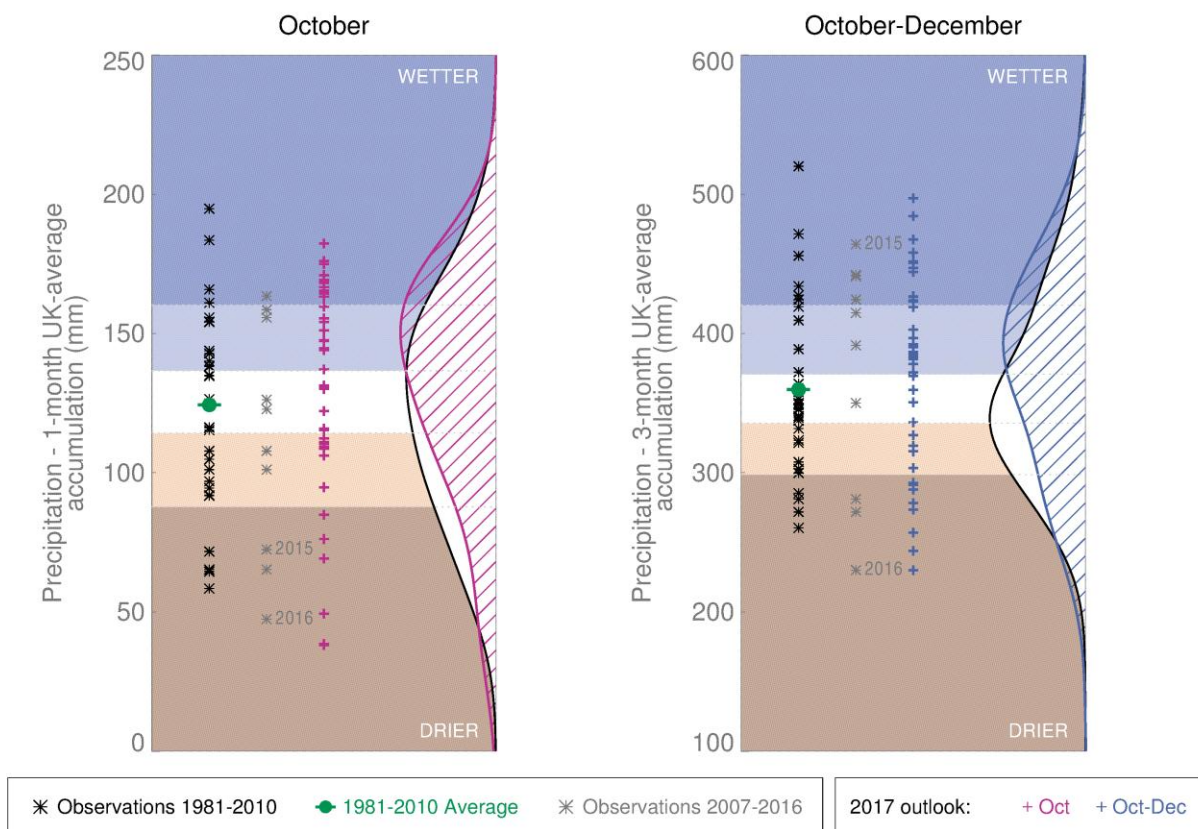
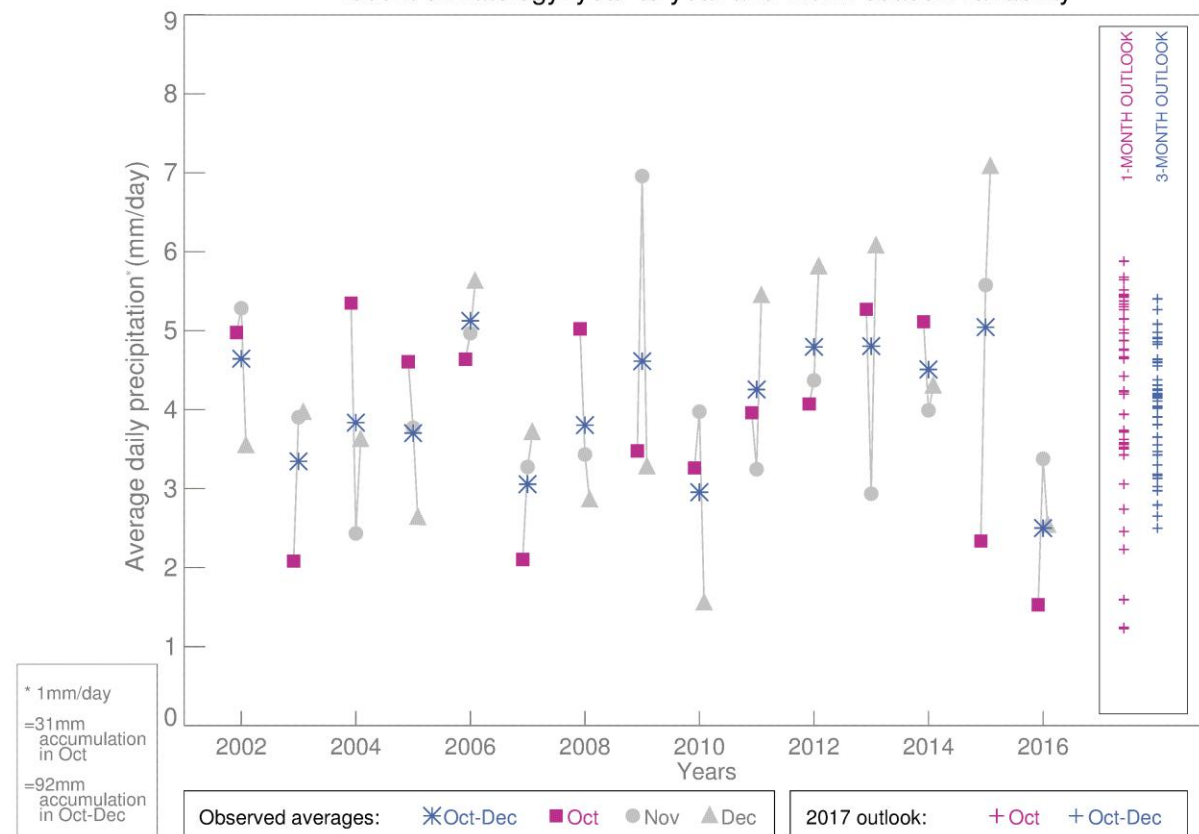


Fig P3

1-month and 3-month UK outlook for precipitation in the context of recent climatology: year-to-year and within-season variability



This Outlook provides an indication of possible temperature and rainfall conditions over the next 3 months. It is part of a suite of forecasts designed for contingency planners. The Outlook should not be used in isolation but should be used with shorter-range and more detailed (30-day, 15-day and 1-to-5-day) forecasts and warnings available to the contingency planning community from the Met Office.