

The regional maps illustrating the regional river flows for five members of the Met Office ensemble of rainfall forecasts give some indication of the range of possible river flows in the coming months. As noted previously, the actual flows could be more extreme than the flows generated by either the lowest or highest members of the rainfall ensemble.

The bar charts (below) give further insight into the range of river flow forecasts by considering all members of the forecast rainfall ensemble. The regional bar charts show the percentage of ensemble forecasts falling in each of the flow categories as generated by the monthly-resolution water-balance model. As before results are averaged by region then ranked in terms of 54 years of historical regional flow estimates (1963 – 2016).

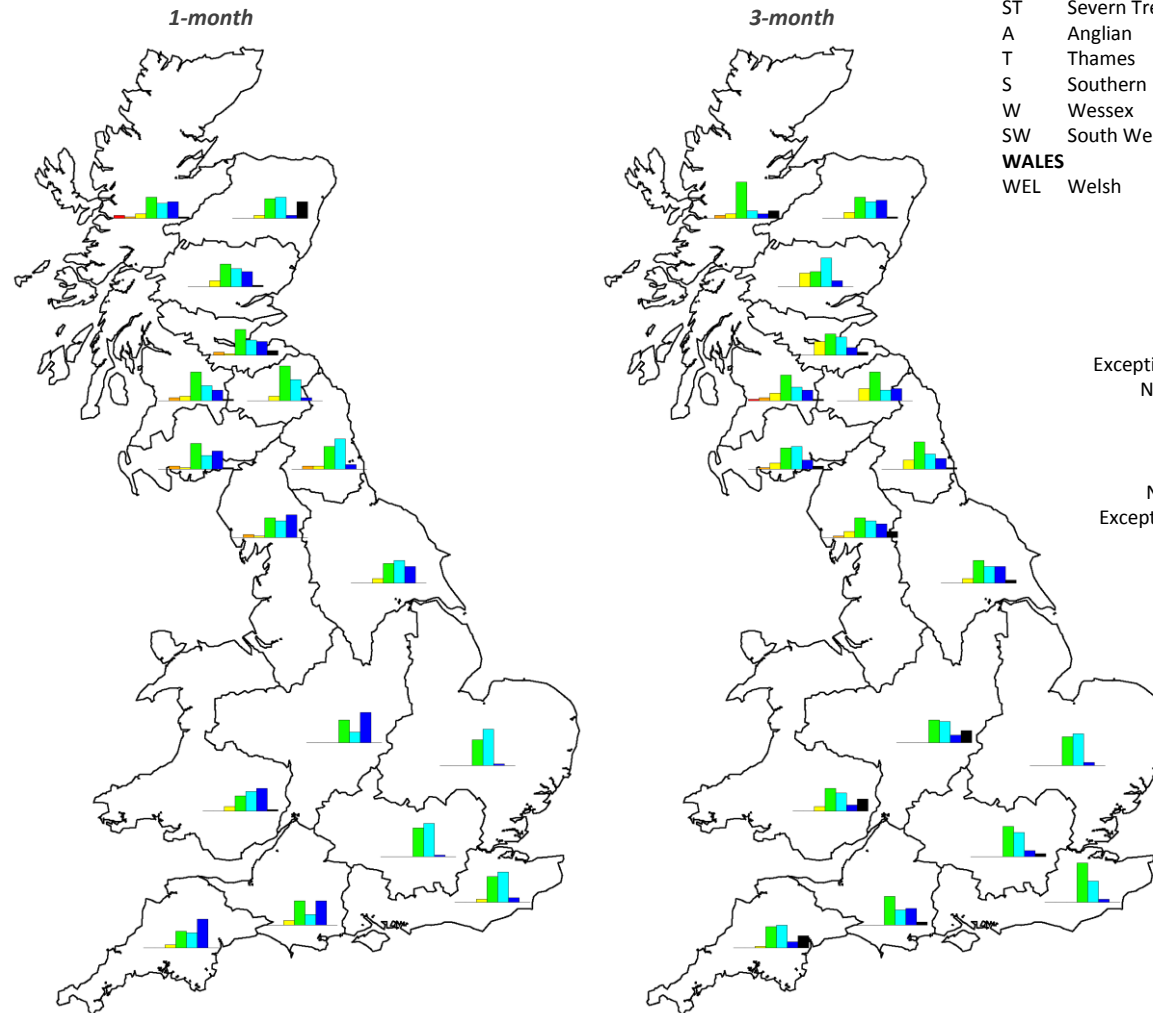
**SUMMARY:** It is likely that October river flows will be in the *Normal range* or above. There's a greater than 50% chance that all regions (except the Tweed and Clyde Regions) will have river flows in the *Above normal*, *Notably high* or *Exceptionally high* categories.

**Over the next 3 months** it is likely that river flows will be in the *Normal range* or above.

- SCOTLAND**  
 HR Highlands Region  
 NER North East Region  
 TR Tay Region  
 FR Forth Region  
 CR Clyde Region  
 TWR Tweed Region  
 SR Solway Region
- ENGLAND**  
 N Northumbria  
 NW North West  
 Y Yorkshire  
 ST Severn Trent  
 A Anglian  
 T Thames  
 S Southern  
 W Wessex  
 SW South West
- WALES**  
 WEL Welsh



**NORTHERN IRELAND**  
 This method cannot currently be used in Northern Ireland



Percentile range of historic values for relevant month

Exceptionally high flow	> 95
Notably high flow	87-95
Above normal	72-87
Normal range	28-72
Below normal	13-28
Notably low flow	5-13
Exceptionally low flow	< 5

